

PERTH 2011 ISAF SAILING WORLD CHAMPIONSHIPS

PERTH 2011
ISAF SAILING
WORLD
CHAMPIONSHIPS

COACH BOAT REGULATIONS

3RD - 18TH DEC 2011
PERTH2011.COM

THE DREAM BEGINS IN PERTH!



PERTH 2011 ISAF SAILING WORLD CHAMPIONSHIPS

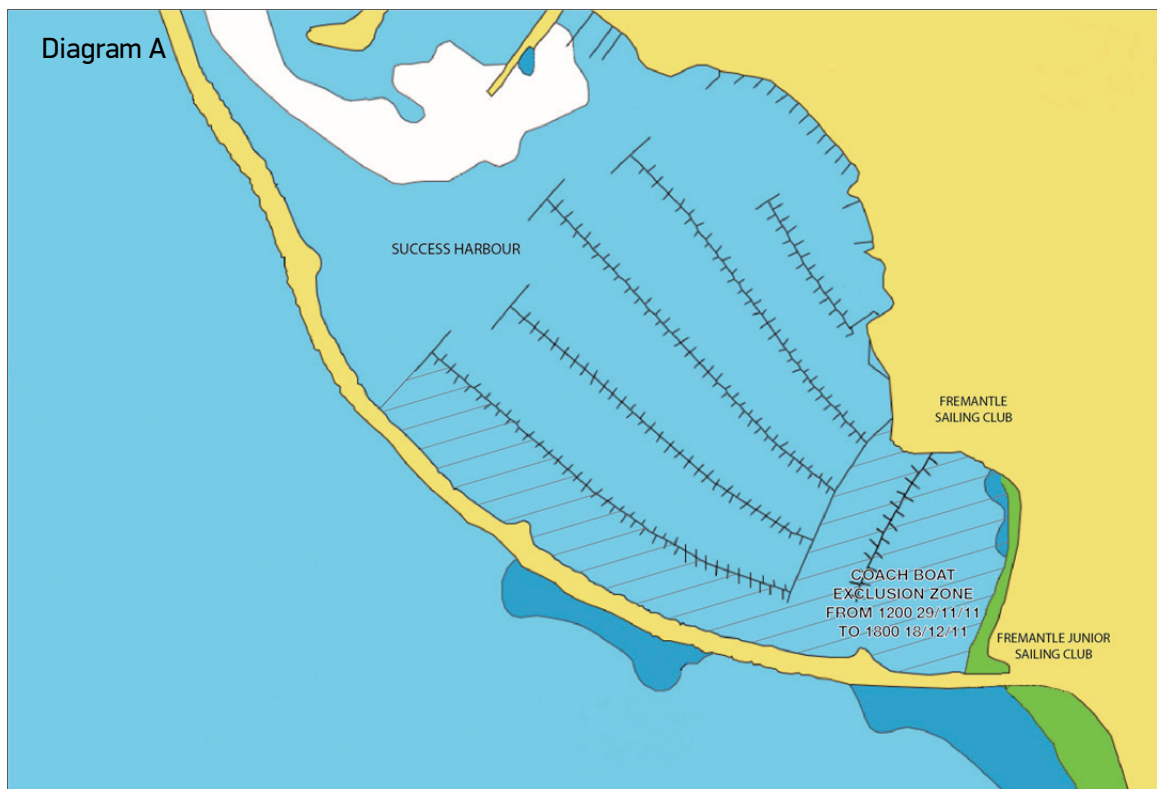
COACH BOAT REGULATIONS

1. GENERAL

- 1.1. These Coach Boat Regulations shall apply from noon 29th November until 1800 18th December 2011. For the purposes of these regulations, a coach boat includes any boat that is under the control or direction of a person who is providing physical or advisory support to an athlete, including the gathering of data that may be used at a later time. The regulations also apply to spectator boats.
- 1.2. An alleged breach of any of these regulations may be referred to the International Jury for a hearing. As a result of the hearing, the International Jury may instruct the Organising Authority to withdraw accreditation and access rights to the Perth 2011 venue and the course areas from the offending party either for a specified period or without the option of replacement during the Regatta. Note also racing rule 69.2(a) as it relates to 'other person involved'.
- 1.3. The Organising Authority may change these regulations at any time. Changes will be posted on the Official Notice Board and circulated to the team leaders.
- 1.4. The Organising Authority may, at its discretion, refuse coach boats not deemed to be suitable. Generally, open boats more than 4.0m and less than 7.0m in length and having minimal or no superstructure (cabin, coach house, bridge, etc) are considered suitable.
- 1.5. With the exception of a windsurfer travelling to and from a course area, or between races, no item carried on board a coach boat shall protrude over the stern, bow or sides of the boat.
- 1.6. All coach boats shall be registered at the Regatta Office by 17:00 on the Saturday evening before the first race for the Event that it is supporting.
 - 1.6.0. Each boat shall be insured with valid third-party liability insurance with a minimum coverage of AUD10 million (or equivalent) per incident.
 - 1.6.1. The person registering the coach boat shall sign to confirm that:
 - Third party liability insurance is in place;
 - The designated driver has a motorboat driving licence recognised by a national authority appropriate to that boat.
 - Anyone who will be using a radio has an appropriate radio operating licence recognised by a national authority.
 - 1.6.2. Any radio device including VHF marine transceivers shall comply with Australian radio equipment regulations, and may be subject to checking by the Australian independent communications regulator, ACMA, during the Regatta – See Communiqué #18 for details
- 1.7. Coach boats shall be marked in compliance with NoR 14.2, coach boat registration stickers will be supplied by the Organising Authority to all approved coach boats at registration and shall remain the property of the Organising Authority at all times.
- 1.8. Coach boats shall only carry accredited personnel.
- 1.9. Coach boats are permitted to carry one or more coaches or other support personnel from other competing nations that do not have a registered coach boat for that Event.
- 1.10. While one or more Events are in progress on a course area, coach boats shall remain outside the course area unless they have a competitor entered in one of those Events.

2. PERTH 2011 VENUE

- 2.1. Unless arranged through their pre event training agreement coach boats shall use public launching ramps for launching. Once launched, trailers may be stored at the Perth2011 Container and trailer storage facility on Curtin Avenue, Leighton. All trailers shall have the boat or owner's name and MNA with number marked on the trailer for identification purposes.
- 2.2. Only registered coach boats may berth in the allocated coach boat mooring area in Fremantle Inner Harbour.
- 2.3. From 29th November – 18 December, between 0830 and 1700, when not in use, coach boats may be temporarily berthed at the designated wharf area in the Fishing Boat harbour but shall NOT berth overnight at this location. The location of the permitted temporary wharf is marked in Green on the diagram B following.
- 2.4. Except in an emergency, coach boats shall not use the dinghy launching boat ramps in the boat parks for any purpose whatsoever, including mooring, launching, retrieval, loading and unloading of equipment.
- 2.5. Coach boat shall NOT enter the area bound by Fremantle Sailing Club D jetty and the Success western harbour wall from noon on 29th November until 1800 on 18th December unless for the sole purpose of towing an athlete's boat that is disabled and unable to sail. See shaded area on Diagram A following.



- 2.6. Coach boats shall NOT enter Challenger Harbour (Royal Perth Yacht Club Marina) from noon on 29th November until 1800 on 18th December unless for the sole purpose of towing an athlete's boat that is disabled and unable to sail. See shaded area on Diagram B following.



3. SAFETY

3.1. Coach boats shall carry on board:

- Life jackets / approved personal flotation device for all accredited passengers, including the driver; (it is recommended they are worn at all times afloat)
- First-aid kit;
- VHF radio capable of receiving instruction on International VHF 71 & 77.
- Compass;
- Adequate anchor and tackle for the conditions and water depth;
- Tow rope (minimum 15m long and 10mm thick);
- Operational engine kill cord; and
- Knife.
- Additional safety equipment as required by local laws for locally chartered coach boats, as detailed in their charter agreement.

3.2. Coach boats shall never exceed maximum plated / certified passenger limits.

- 3.3. It is strongly recommended that the kill cord is used at all times when the engine is running.
- 3.4. Coach boats shall comply with local harbour and marina regulations. In particular:
- Shall pass on the correct side of the cardinal marks entering and exiting the Fremantle Boat Harbour, Success Harbour and Challenger Harbour.
 - Boats shall avoid commercial traffic and shall cross shipping and boating access channels as nearly as practicable at right angles; and
 - Speed limits shall be respected in the harbours and marinas (Dead Slow).
 - Shall obey instructions from government Marine Safety officials.

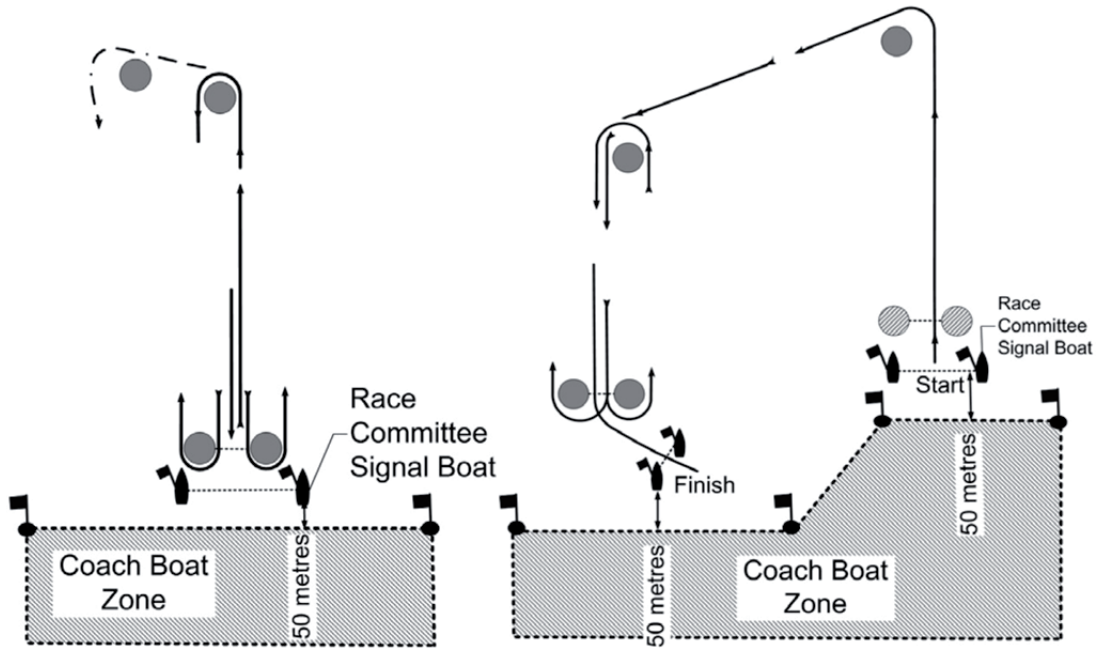
4. GENERAL RESTRICTIONS

- 4.1. The registered driver(s) of a coach boat shall be responsible for the control of the boat at all times and will be held responsible for any inappropriate behaviour, dangerous actions or improper practices affecting the fairness or safety of competition.
- 4.2. Coach boats shall not leave any device, piece of equipment, buoy, marker or similar item permanently in the water. Temporary use of floating objects is allowed for current measurement. These objects shall be removed as soon as the measurement has been taken. In case this regulation is broken, and in addition to any penalty, any item left in the water may be removed and destroyed for safety reasons.
- 4.3. At all times, the registered driver(s) of a coach boat shall comply with directions given by a Race Official. In particular, this includes assisting in rescue operations when requested to do so.

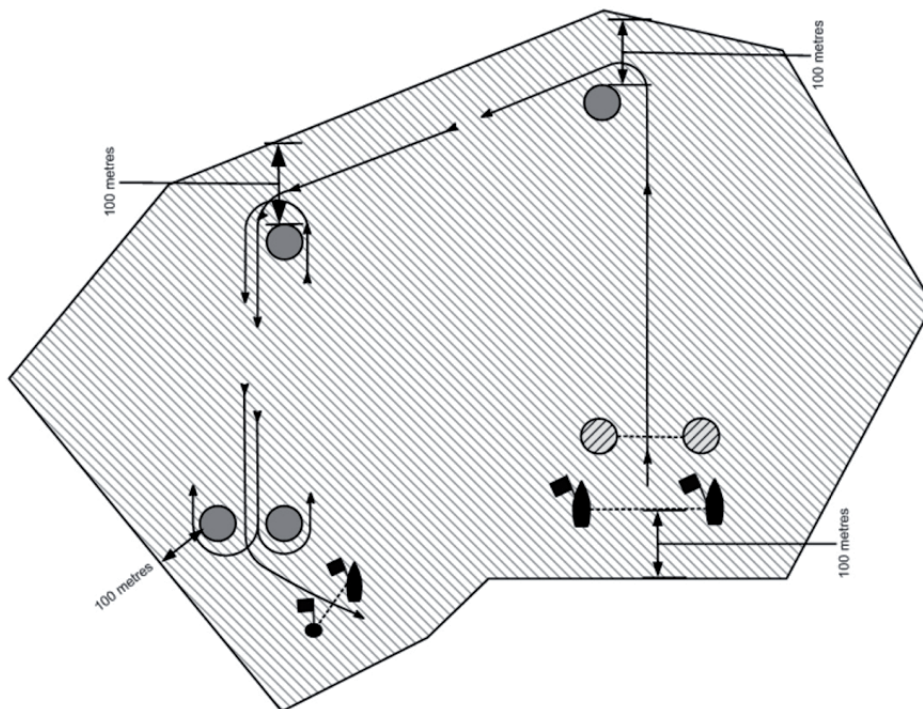
5. COACH BOAT ZONE: NON-MEDAL FLEET RACES EXCEPT FOR CENTRE COURSE

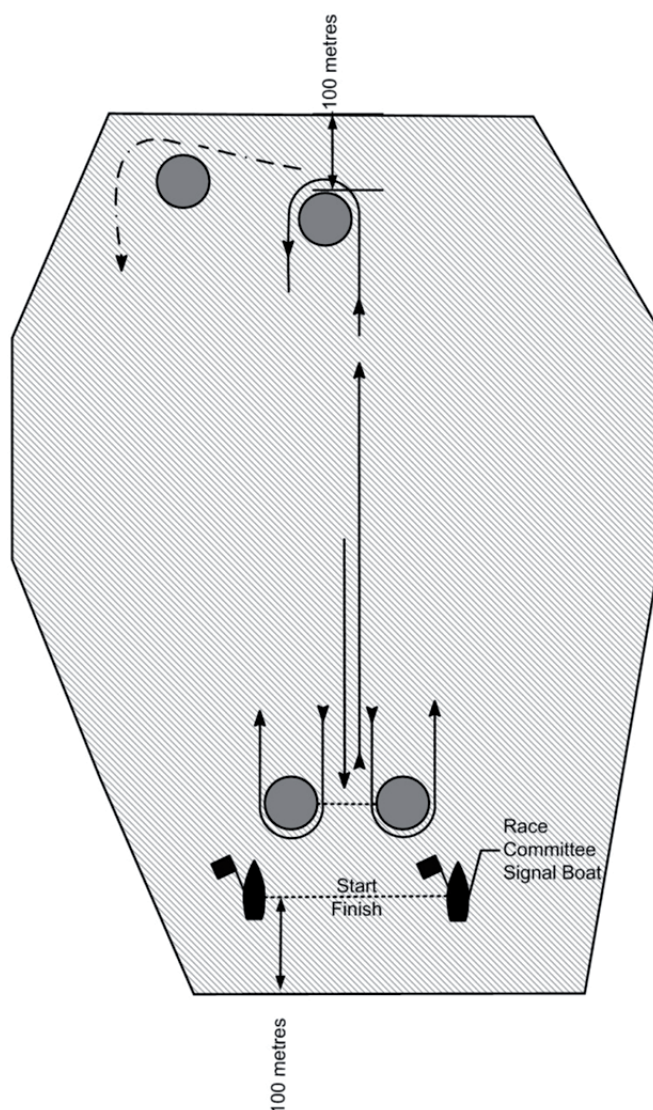
- 5.1. Unless otherwise instructed by the Race Committee, coach boats shall not be positioned:
- 5.1.1. Closer than 50m to any boat racing;
 - 5.1.2. Within 50m of the starting line and marks from the time of the preparatory signal until all boats have left the starting area or the Race Committee signals a postponement, general recall or abandonment;
 - 5.1.3. Between any boat racing and the next mark of the course;
 - 5.1.4. Between the inner and outer trapezoid courses when boats are racing on both courses;
 - 5.1.5. Within 50m of any mark of the course while boats are in the vicinity of that mark; and
 - 5.1.6. Within 50m of the finishing line and marks while boats are finishing.
- 5.2. Coach boats should proceed around the race area in a way to minimise the effect their wake will have on boats racing. Boats that are motoring above 5 knots shall remain at least 150m from any boat racing.
- 5.3. Between sequences of races or when all racing for that course area has been postponed or abandoned, coach boats may enter the course area to service their athletes, but shall restrict their speed to 5 knots. If further racing is to take place, coach boats shall immediately move outside the racing area at the warning signal for the first race of the next racing session and remain in the Coach Boat Zone until after the starting sequence has been completed for one or more starts in a session.

COACH BOAT ZONE - PRESTART



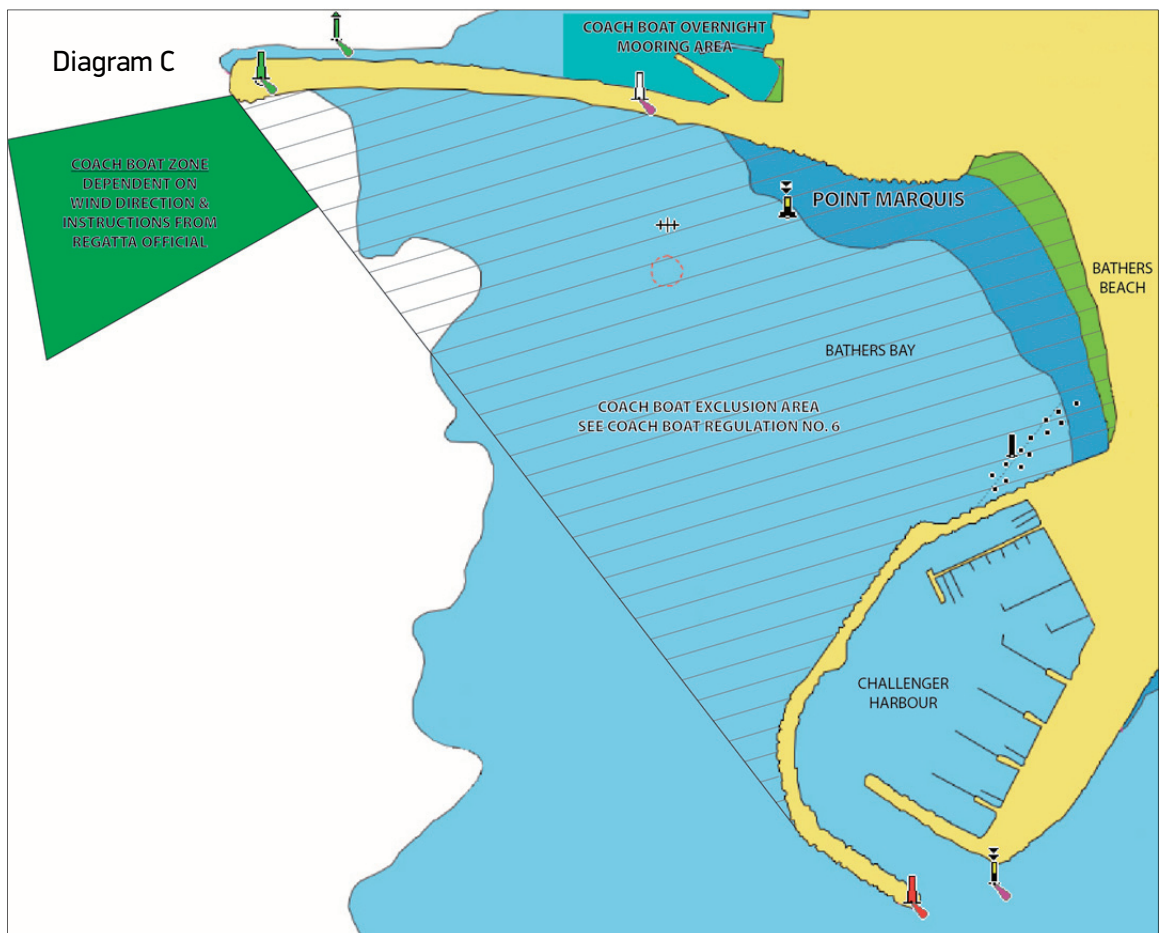
COACH BOAT RESTRICTED (SHADED) AREA AFTER THE STARTING SEQUENCE/SESSION HAS BEEN COMPLETED





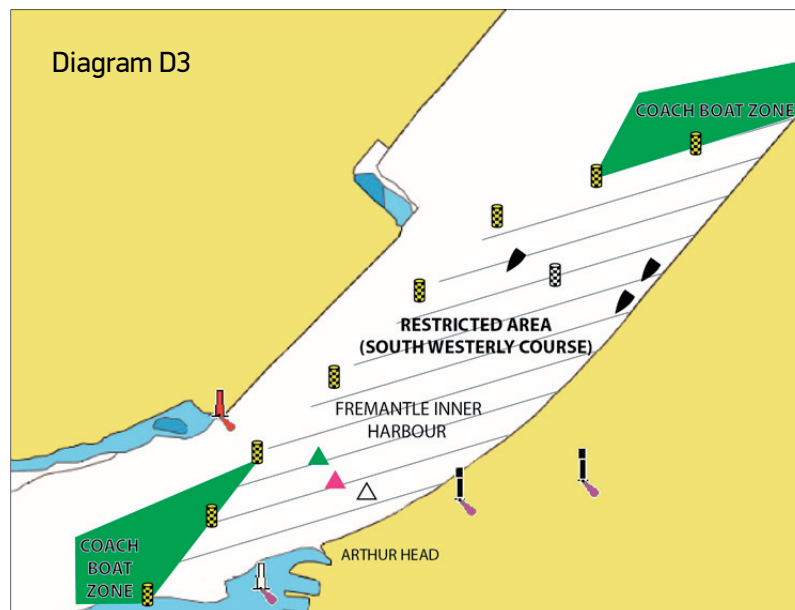
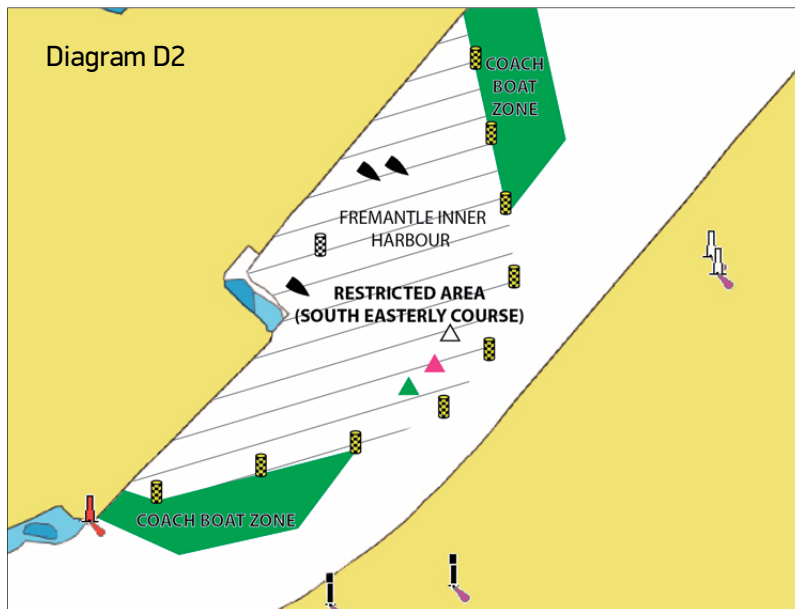
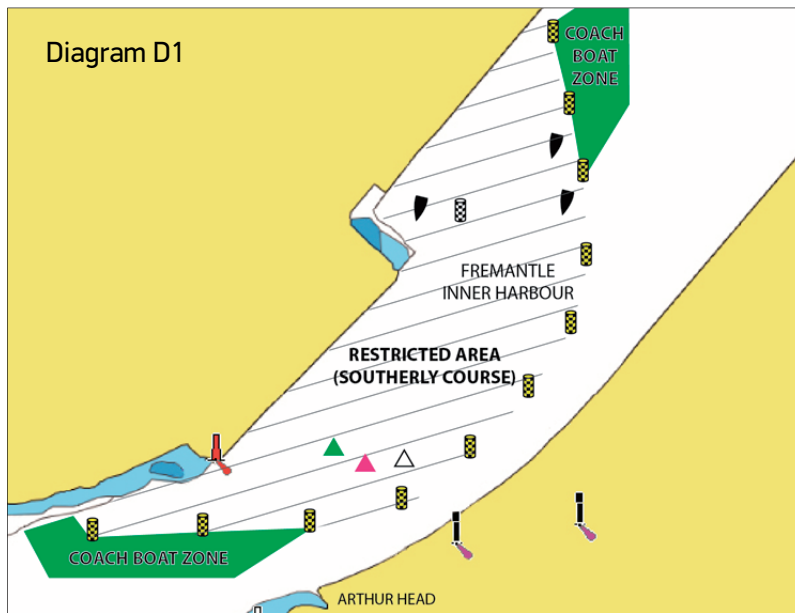
6. COACH BOAT ZONE: MEDAL RACES AND CENTRE COURSE

- 6.1. After the first warning signal of the day coach boats on the Centre Course shall retire to the Coach Boat Zone until all racing has been completed, postponed or abandoned for that course area, unless instructed to do otherwise by the Race Committee. (See Diagram C).
- 6.2. When all fleet racing for that course area has been postponed or abandoned, coach boats may enter the course area to service their athletes. If further racing is to take place, coach boats shall immediately retire to the Coach Boat Zone at the warning signal for the first race of the next racing session.
- 6.3. The Medal Race Coach Boat Zone and any further restrictions for Medal Races will be defined in a notice that will be posted on the Official Notice Board prior to Medal Races.



7. COACH BOAT ZONE: FREMANTLE INNER HARBOUR COURSE

- 7.1 A maximum of one coach boat per MNA assigned to race on that day is permitted into the Fremantle Inner Harbour.
- 7.2 After the first attention signal of the day coach boats shall retire outside either, the upstream or downstream end, of the Fremantle Inner Harbour Restricted Area, until all racing has been completed, postponed or abandoned for the match racing course area, unless instructed to do otherwise by a Race Official. The area outside either end of the restricted area is the 'Coach Boat Zone'.
- 7.3 Two large 'Team observation boats' will be anchored in the vicinity of the starting line, inside the Fremantle Inner Harbour Restricted Area, for all WMR athletes and a maximum of one accredited coach per team. At limited times, a small 'shuttle' vessel may be available to transfer team members and their coaches to and from the Inner Harbour transfer dock and the 'Team observation boats'.
- 7.4 Teams will be transferred at team change over from these 'Team observation boats' to their boats for racing.
- 7.5 Examples of the Fremantle Inner Harbour Restricted (and Course) Area and Coach Boat Zone for various wind directions are shown in Diagram D1, D2 and D3



8. EQUIPMENT

- 8.1. It is prohibited to carry any electronic device on board a coach boat except:
- Items listed in 3.1;
 - Any device for time-keeping;
 - Devices for measurement of wind (wind speed and bearing only), depth, compass bearing and boat speed and heading;
 - Electronic equipment strictly related to the safe operation of the boat and engine;
 - Photo camera(s);
 - Video camera(s);
 - Tape or digital voice recorder(s);
 - Electronically stabilised binoculars; and
 - A GPS receiver.
- 8.2. While on the water, a coach boat shall not carry equipment capable of making radio transmissions or receiving radio communications, except for equipment allowed by regulation 3.1 and 8.1.
- 8.3. While on the water, any communication equipment carried in accordance with regulations 3.1 and 8.1 shall not be used to discuss any technical sailing, weather or tidal information.
- 8.4. When the Race Committee displays flag V with repetitive sounds, all coach boats shall monitor VHF radio channel 71 for search and rescue instructions and comply with these instructions (if safe to do so)

