

8th World University Sailing Championship PERTH, Western Australia 25TH – 30TH SEPTEMBER 2016



SAILING
2016

Perth
Australia

FISU World University
Championship



AMENDMENT N°2 TO THE NOTICE OF RACE

OA: The Organising Authority
FISU : International University Sports Federation
ISAF: International Sailing Federation
NoR: Notice of Race
CISCA: International Supervision Control and Arbitration
Committee of FISU
MNA: National Authority

Amendment 1: 12/2/12

Amendment 2: 18/3/16

1 ORGANISING AUTHORITY

The Organising Authority (OA) will be Swan River Sailing appointed by Australian University Sport (OC), under the auspices of the International University Sports Federation (FISU) and the International Sailing Federation (ISAF), in conjunction with the Royal Perth Yacht Club.

2 VENUE

The regatta will be hosted by the Royal Perth Yacht Club, Australia II Drive, Crawley, (Perth) Western Australia, and sailed in Matilda Bay on the Swan River.

3 EVENT GRADING

The event has applied for ISAF Grade 3.

This grading is subject to review by the ISAF Match Race Rankings Sub Committee. The event may be re-graded when there is clear reason to do so.

4 PROGRAM

4.1 Provisional program:

DAY	OPEN	WOMEN	
Saturday September 24 th	12:00-17:00	Arrival of delegations and registration of entries	
Sunday September 25 th	09:00-15:00 09:00-15:00 15:30 17:00	Arrival of delegations and registration of entries Practice per groups General meeting Opening ceremony	
Monday September 26 th	08:15 09:15	Briefing Attention signal	08:15 09:15 Briefing Attention signal RR
Tuesday September 27 th	08:15 09:15	Briefing Attention signal	08:15 09:15 Briefing Attention signal RR
Wednesday September 28 th	08:15 09:15	Briefing Attention signal	08:15 09:15 Briefing Attention signal RR



Thursday September 29 th	08:15 09:15	Briefing Attention signal quarter finals and rankings	08:15 09:15	Briefing Attention signal
--	----------------	--	----------------	------------------------------

Friday September 30 th	08:15 09:15	Briefing Attention signal semi finals and finals	08:15 09:15	Briefing Attention signal semi finals and finals
	Following event	Awarding ceremony		
Saturday October 1 st	morning	Departure of delegations		

A daily press conference and/or umpire debriefing may take place after the last race of each day.

- 4.2 Unless excused by the OA, attendance at the following is mandatory:
- General meeting for all participants;
 - Daily briefing for skippers;
 - Daily press conferences for skippers sailing that day;
 - Opening and Awarding ceremonies for all participants.

5 ELIGIBILITY

- 5.1 The regatta comprises the following events:
- World University Sailing Championship (Open match racing category, men or mixed crews);
 - 16 Open teams will be invited;
 - World University Sailing Racing Championship (Women Match racing category);
 - 10 Women's teams will be invited.

Each country may enter 2 teams in each event. FISU Handbook Sport Regulation applies.

- 5.2 Each competitor shall:
- be a national of the country he/she represents;
 - be at least 17 and less than 28 years of age on January 1st 2016;
 - students who are currently officially registered as proceeding towards a degree or diploma at a university or similar institute whose status is recognised by the appropriate national academic authority of their country and former students of the institutions mentioned above who have obtained their academic degree or diploma in the year preceding the event;
 - meet the conditions laid down under individual sports FISU Regulations.
- 5.3 Only skippers nominated by their National University Sport Federation are eligible to enter this event.
- 5.4 Only the representatives entered by their National University Sport Federation will be eligible to enter this event.
- 5.5 ISAF classification requirement will not apply.
- 5.6 All competitors shall meet the eligibility requirements of ISAF regulation 19.



Regulation 19.4(a) states that competitors have to be members of an organisation/club affiliated with his/her MNA.

5.7 All skippers shall obtain an ISAF Sailor ID by registering online at www.sailing.org/isafsailor. Skippers shall inform the OA of their ISAF Sailor ID at registration.

5.8 The registered skipper shall helm the boat at all times while racing, except in an emergency.

6 ENTRIES

6.1 Latest dates for entries will be as follows:

- General Entries: 24 March 2016
- Quantitative Entries: 24 June 2016 Q1 form
- Prepayment Deposit: 24 June 2016 send to the OA
- Individual and Official Entries: 24 August 2016 N1 and N2 forms

Late entries may be allowed outside these dates and are at FISU's and OA's discretion.

6.2

- a) The total entry fee will be 70 Euros per person per day. This includes the boat charter fee, boat insurance, local transportation, accommodation and food;
- b) A non-refundable prepayment deposit of 15 € per person per day shall accompany the Quantitative entry form for this to be valid. This deposit must be sent to the following bank:

Australian University Sport Ltd

BSB: 084 004

Acc No: 51 777 1764

Swift Code: NATAAU3303M

- c) A non-refundable entry fee of 55 € Euros amount per person, per day shall be paid by/at accreditation.
- d) The entry fee includes a transfer to-from the Perth Airport that is located approximately 19 km from Royal Perth Yacht Club and University of Western Australia. Each team must inform via mail or via the web site the forecasted arrival/departure schedule at least one week in advance.

6.3 The entries shall be sent by the National Federation of the University Sports (or similar authority) of the country of participants using the reserved FISU Accreditation System, which can be found on this link <https://accreditation.fisu.net/Pages/Home.aspx>

6.4 Accreditation will be done upon arrival of the Officials, Coaches and Competitors where all fees shall be paid. All competitors must produce the documents required in FISU Regulation.

Teams may send a team manager with all necessary documents to complete the accreditation. Competitors not registered before the general meeting on Sunday September 25th will not be allowed to participate in the regatta unless excused by the OA.

6.5 The team shall be only considered as entered on completion of accreditation, crew weighing and the payment of all fees and deposits. All payments shall be made by credit card/ cash/bank transfer.



- 6.6 Damage deposit
- a) An initial damage deposit of 2,000 AUD (Australian Dollars) amount shall be paid by a team at accreditation, unless extended by the OA. This deposit is the maximum payable by the skipper or the team as a result of any one incident. The initial damage deposit can be made by credit card at accreditation;
 - b) In the event a deduction from the damage deposit is decided by the OA it may require that the deposit be restored to its original amount before the skipper will be permitted to continue in the event;
 - c) Any remaining deposit after the event will be refunded within 10 days after the event.

- 6.7 Withdrawal
- When a skipper accepts an invitation and later withdraws within one month of the event or leaves the event before the end without written approval from the OA, a zero score may be applied to their Ranking points for that event by the ISAF. (ISAF Regulation 27.2).

7 RULES

7.1

- a) The event will be governed by the rules as defined in the Racing Rules of Sailing (RRS), and including Appendix C.
- b) The rules for the handling of boats will apply, and will also apply to any practice sailing race;
- c) Class rules will not apply;
- d) If any prescriptions of Yachting Australia will be applied it shall be posted on the official notice board;
- e) The event will be also governed by FISU regulations for University Sport Championship:
<https://accreditation.fisu.net/WUC-SL08/Documents/29.%20Sailing%20Technical%20Regulations.pdf>

7.2 Major alterations to the RRS

- a) Add to RRS 41: (e) help to recover from the water and return on board a crew member, provided the return on board is at the approximate location of the recovery.
- b) Rule C.8.6 may be changed in the sailing instructions.
- c) RRS C3.1 will be changed in the sailing instructions so that:
 - (i) the Attention signal will be displayed 6 minutes before the start;
 - (ii) The Attention signal will be removed 5 minutes before the start;
 - (iii) the warning signal will be displayed at 4 minutes before the start;
 - (iv) the preparatory signal will be displayed 3 minutes before the start.
- d) The World Sailing package of Test Rules published on 6th January 2016 will be used at this event. See appendix 3.

- 7.3 An International Jury (IJ) will be appointed, approved by Yachting Australia, in accordance with RRS Appendix N, and the right of appeal will be denied in accordance with RRS 70.5.

8 BOATS AND SAILS

8.1 Type of boats:



- **8 x Foundation 36 yachts will be provided for Open Championship**
- **6 x Bakewell-White 8m yachts will be provided for Women Championship.**

- 8.2 The following sails will be provided for each boat:
- **F36: mainsail, genoa, jib and symmetrical spinnaker.**
 - **BW8: mainsail, genoa, jib and symmetrical spinnaker.**
- 8.3 Boats will be allocated by draw, either daily or for each round as decided by the Race Committee.
- 8.4 While racing, competitors shall be required to wear bibs displaying their national flag on the back (this changes RRS G1.1). These bibs will be provided by the OA. They will be worn outside of all other clothing.
- 8.5 Personal flotation devices (Level 50, PFD Type 2) will be provided by the OA. However, competitors may wear their own personal flotation device (at least to standard Level 50S – PFD Type 3). A basic tool kit including personal hand tools is authorised on board.

9 CREW

- 9.1 The number of crew (including the skipper) shall be:
- **Open** category: **5 crew**
 - **Women** category: **4 or 5** crew.

All registered crew shall sail all races.

- 9.2 The maximum total crew weight, when wearing at least shorts and shirts, determined prior to racing shall be: **437.5kgs** for Open category and **272kgs** for Women category.
- 9.3 When a registered skipper is unable to continue in the event CISCA may authorise an original crew member to substitute.
- 9.4 When a registered crew member is unable to continue in the event CISCA may authorise a substitute, a temporary substitute or other adjustment.

10 EVENT FORMAT

- 10.1 Open championship: According to the number of teams registered, skippers could be divided in two groups based on ISAF Match Racing world ranking list dated 10 days prior the event.
- 10.2 The event format of the Open and Women's event will be detailed in the sailing Instructions but will comprise: sailing in round robins followed by a knockout finals series.

The OA may change the format, terminate or eliminate any round, when conditions do not permit the completion of the intended format.

11 COURSE

- 11.1 The intended course will be windward/leeward with starboard roundings, finishing downwind.
- 11.2 The course area will be in Matilda Bay, Swan River, Perth, Western Australia. – See Appendix 1.

12 ADVERTISING



- 12.1 As boats and equipment will be supplied by OA. ISAF regulation 20.4.2 applies. Each boat will be required to display advertising as supplied by the OA.
- 12.2 Boats shall not be permitted the right to protest for breaches of any rules regarding advertising (amends RRS 60.1).

13 PRIZES

- 13.1 Medals will be awarded to the first three teams in each category:
 The first team: Gold Medals;
 The second team: Silver Medals;
 The third team: Bronze Medals
- 13.2 Each competitor/coach/official will receive a Diploma of Participation.

14 MEDIA, IMAGES AND SOUND

The OA shall have the right to use any images and sound recorded during the event free of any charge.

15 COACH BOATS

No coach boat shall be allowed on the water. Spectators can view the racing from ashore.

16 OTHER REQUIREMENTS

Trackers supplied by the OA may be required to be carried on board while racing.

Competitors shall not interfere with the normal working of the OA supplied media equipment.

17 DISCLAIMER

All those taking part in the event do so at their own risk. The OA, its associates and appointees accept no responsibility for any loss, damage, injury or inconvenience incurred, howsoever caused. Attention is drawn to ISAF racing rule 4 Decision to Race.

18 INFORMATION

www.wucsailing2016.com.au

Organising Committee:

Australian University Sport
 Suite 1.12 Sports House, 150 Caxton st
 Milton, Q, 4064
 Ph: + 61 7 3876 2610
 Email: wucsailing2016@unisport.com.au

Host University:
 University of Western Australia

Host Yacht Club:
 Royal Perth Yacht Club
 Australia II Drive,
 CRAWLEY, 6009, WA
www.rpyc.com.au

Organising Authority:

Swan River Sailing
 PO Box 566,
 CLAREMONT, 6910, WA
www.swanriversailing.com



For extra **information** and details, please contact:

International University Sports Federation:

Phone: +41 216143069

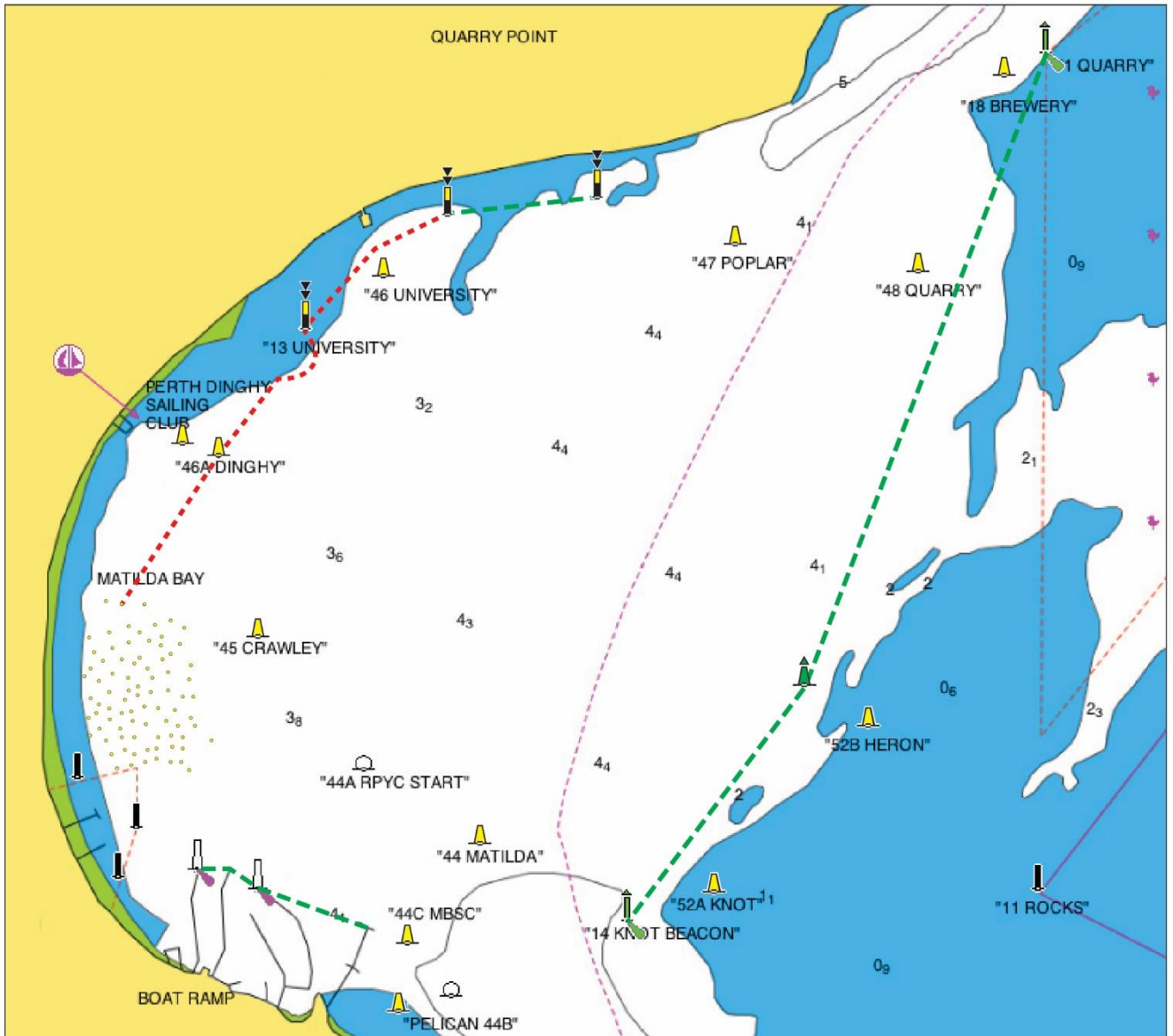
e-mail : championships@fisu.net

website : www.fisu.net



APPENDIX 1

COURSE AREA - Matilda Bay, Swan River, Perth, Western Australia:



- Course Limits as defined in the Sailing Instructions. Prohibited to cross these lines.
- Recommended safe limit of navigable water. Cross these lines at your own risk.

APPENDIX 2

EXTRACTS OF THE FISU TECHNICAL HANDBOOK (SAILING REGULATIONS 2016)

3. Sport Regulations

3.1 General Terms

The sailing competition shall be organised in accordance with the most recent technical regulations (RSS) of the International Sailing Federation (ISAF). In the event of a dispute, the English text shall be regarded as authoritative.

The program and duration of competitions shall be fixed by the FISU Executive Committee in agreement with the Organising Committee and the CTI

A country may enter the following:

Match Racing

A country may enter a maximum of four (4) teams as follows:

-- Two (2) open crews with a maximum of eight (8) competitors and five (5) officials.

-- Two (2) women's crews with a maximum of ten (10) competitors and five (5) officials.

If only one open team participates, the maximum shall be four (4) competitors and two (2) officials.

If only one women's team participates, the maximum shall be five (5) competitors and two (2) officials.

Crews shall consist of four (4) persons in the Open category and four to five (4 to 5) in women's (according to the boat selected for the Championship, the WUC Department may decide to fix this number to three (3) or five (5) persons).

The average weight of open competitors shall not exceed 87.50 kg.

The average weight of women's competitors shall not exceed 68.00 kg.

Except upon a decision by CISCA, the skipper shall not be replaced during the Championship.

Prior to the selection of teams, the OC and the FISU Technical Delegate shall set the number of participating teams in proportion to the number of boats. In principle, the number will be sixteen (16) teams in Open category and ten (10) in women's category.

At the first General Technical Meeting, the Head of Delegation or his/her representative shall confirm and sign the official list of competitors accredited by the CIC.

The boats shall be supplied by the Organising Committee, with motorboats being reserved for trainers if needed.

3.2 Pre-competition Procedure

Three (3) months before the Championship, the Organising Committee has the right to collect **25% of the total cost** of stay per athlete and official from participating countries.

Priority shall be given to the entry of one (1) crew per country. This first list shall be validated by the OC and TD three (3) months before the event. Then, the remaining places shall be given according to **the date of payment**

Drawing

Following the ISAF policy, boats shall be drawn every day or at the end of each pool.

Teams shall be ranked using the round robin system according to the last ISAF world ranking edited 10 days before the event.

Skippers without any world ranking shall be ranked in the group according to the results of the previous WUC.

International Control Committee (CIC)

The member of the FISU CIC supervises the accreditation procedure during which the participants receive their definitive accreditation card. This is, of course, an essential step as, without accreditation, the participants cannot take part in the sports event.

The CIC control guarantees the age, nationality and the student status of the athlete. These three (3) conditions are of prime importance because they confirm that the participants can be accepted to take part in FISU Events, and can represent the country of which they have citizenship.

The documents that the Head of Delegation must provide on behalf of the athletes are:

-- the student card or eligibility form;

-- the passport.

The documents that the Head of Delegation must provide on behalf of the officials are:

-- the passport.

APPENDIX 3

ADDENDUM X - PACKAGE OF TEST MATCH RACING RULES

Below are the details of the changes to the RRS:

A. Add new RRS 7 to Part 1:

7 LAST POINT OF CERTAINTY

When there is doubt as to the relationship or change of relationship between *boats*, the last point of certainty will apply.

B. Delete RRS 18, C2.6 and C2.7 and replace with:

18 MARK-ROOM

18.1 When Rule 18 Applies

Rule 18 applies between boats when they are required to leave a *mark* on the same side and at least one of them is in the *zone*. However, it does not apply between a boat approaching a *mark* and one leaving it.

18.2 Giving Mark-Room

(a) When the first boat reaches the *zone*,

(1) if boats are *overlapped*, the outside boat at that moment shall thereafter give the inside boat *mark-room*.

(2) if boats are not *overlapped*, the boat that has not reached the *zone* shall thereafter give *mark-room*.

(b) If the boat entitled to *mark-room* leaves the *zone*, the entitlement to *markroom* ceases and rule 18.2(a) is applied again if required.

(c) If a boat obtained an inside *overlap* and, from the time the *overlap* began, the outside boat is unable to give *mark-room*, she is not required to give it.

18.3 Tacking or Gybing

When an inside *overlapped* right-of-way boat must tack or gybe at a *mark* to sail her *proper course*, until she tacks or gybes she shall sail no farther from the *mark* than needed to sail that course. Rule 18.3 does not apply at a gate *mark*.

C. Change definition of Mark-Room to:

Mark-Room Room for a boat to sail her *proper course* to round or pass the *mark*.

D. Add the following new rule:

C2.14 Rule 17 is changed to 'After the starting signal, if a boat *clear astern* becomes *overlapped* within two of her hull lengths to *leeward* of a boat on the same *tack*, she shall not sail above her *proper course* while they remain on the same *tack* and *overlapped* within that distance, unless in doing so she promptly sails astern of the other boat.

This rule does not apply if the right-of-way boat is on a leg to a leeward *mark* or the finishing line, or if the overlap begins while

(a) the right-of-way boat is on a leg to a leeward *mark*,

(b) the *windward* boat is required by rule 13 to *keep clear*, or

(c) both boats are OCS.'