



*Sailing Instructions*



**2010 Delta Lloyd Regatta**  
**A 2009-2010 ISAF Sailing World Cup Regatta**  
**26-30 May 2010, Medemblik**

Organising Authority: the Royal Netherlands Yachting Union (RNYU), the Royal Yacht Club Hollandia and Trefpunt Sports & Entertainment

**SAILING INSTRUCTIONS**

"These Sailing Instructions are divided into sections. Section 1 applies to all competition on the water. Section 2 (beginning with SI 20) applies only to fleet racing. Section 3 (beginning with SI 30) applies only to match racing. Section 4 (beginning with SI 40) contains other instructions for all racing."

**Section 1 - All Racing**

**1 RULES**

- 1.1 The regatta will be governed by the rules as defined in *The Racing Rules of Sailing* (RRS).
- 1.2 If there is a conflict between languages the English text will take precedence.
- 1.3 Decisions of the International Jury will be final as provided in RRS 70.5.

**2 SAFETY REGULATIONS**

- 2.1 The Race Committee will protest a boat for a breach of these safety regulations.
- 2.2 Competitors are advised to wear personal flotation devices at all times while afloat.
- 2.3 Boats not leaving the harbour for a scheduled race shall promptly notify the regatta office.
- 2.4 A boat that retires from racing shall notify the Race Committee before leaving the racing area, or if that is not possible, shall notify the regatta office as soon as possible after returning ashore.
- 2.5 Boats retiring from racing in accordance with SI 2.4 shall complete a retirement declaration form at the regatta office before the protest time limit.
- 2.6 In accordance with SI 41, Berthing, boats shall return to and remain in their assigned berths.
- 2.7 Boats/ Boards shall not sail in the course areas defined in the Sailing Instructions when races are taking place except in her own race.



### 3 RACING AREAS

- 3.1 The racing areas are shown in SI Addendum A.
- 3.2 Events are assigned to racing areas as stated in SI Addendum C.
- 3.3 Events may be allocated to different racing areas on different days, although the organising authority will try to avoid such a change.

### 4 MARKS

- 4.1 Marks 1, 2, 3, and 4, or associated gate marks, will be as follows:

Area	Mark shape	Mark Colour
Green	Cylindrical	Green
Orange	Conical	Orange
Blue	Conical	Blue
Yellow	Cylindrical	Yellow
Red	Cylindrical	Red
Medal race	Conical	Orange
Match race	Cylindrical	Dark Blue, New Mark will be white.

- 4.2 The starting marks will be Race Committee boats. The finishing marks will be a Race Committee boat and a dan buoy. For the Medal Race the Start/Finish marks will be dan buoys with orange flags.
- 4.3 A Race Committee boat signalling a change of a leg of the course is a mark as provided in instruction 24.2.

### 5 CLASS FLAGS

Class flags will be class insignia on the following background:

Event	Class	Background Colour
Men's One Person Dinghy	Laser Standard	White
Women's One Person Dinghy	Laser Radial	Light Blue
Men's One Person Dinghy Heavy	Finn	White
Men's Two Person Dinghy	470 M	White
Women's Two Person Dinghy	470 W	Light Blue
Men's Two Person Dinghy High Performance	49er	White
Men's Keelboat	Star	White
Women's Keelboat Match Racing	Elliott 6M	White
Men's Windsurfer	RS:X M	White
Women's Windsurfer	RS:X W	Light Blue
One Person Paralympic	2.4 mR	White

If split-fleets are used the group colour, if applicable, will be hoisted with the Class Flag.



## 6 THE START

- 6.1 The starting line will be between a staff displaying an orange flag on the Race Committee boat at the starboard end and a staff displaying an orange flag on the Race Committee boat at the port end. Except for Match race where the starting line will be between a dan buoy displaying an orange flag at starboard end and a dan buoy displaying an orange flag at the port end.
- 6.2 A buoy may be attached to the Race Committee starting boat anchor line just below keel depth. Boats shall not pass between this buoy and the Race Committee starting boat at any time. This buoy is part of the Race Committee starting boat ground tackle.
- 6.3 Boats whose warning signal has not been made shall avoid the starting area. The starting area is defined as a rectangle 50 meters from the starting line and marks in all directions.

## 7 THE FINISH

- 7.1 The finishing line will be between a staff displaying an orange flag on the Race Committee boat and a dan buoy displaying an orange flag.

## 8 TIME LIMITS AND TARGET TIMES

- 8.1 Except for medal races, time limits and target times (in minutes) are as follows:

Class	Time Limit	Mark 1 Time Limit	Finish Window	Target Time
470, Laser Radial, Laser Standard	90	30	20	60
49er	50	20	10	30
Elliott 6M	None	None	5	16 to 18
Finn, Star	115	40	25	75
RS:X	50	20	15	30 to 35
Paralympic Event	90	30	20	60

- 8.2 Time limits and target times for medal races are as follows:

Class	Time Limit	Mark 1 Time Limit	Finish Window	Target Time
RS:X	50	20	10	20
All other classes	50	30	10	30

- 8.3 If no boat has passed Mark 1 within the Mark 1 Time Limit the race will be abandoned.
- 8.4 Boats failing to finish within the time stated in the Finish Window after the first boat sails the course and finishes will be scored Did Not Finish. This changes RRS 35, A4 and A5.



## **9 IDENTIFICATION AND ADVERTISING WHILE RACING**

- 9.1 Each day, the first, second and third boats in series ranking at the beginning of the day shall display a yellow, blue and red bib on the crew respectively. The organizing authority will supply the bibs and instructions for their use.  
In addition the first, second and third boats in series ranking at the beginning of the day shall display a yellow, blue and red dot respectively. The organizing authority will supply the dots. Instructions for their use are in Addendum F.
- 9.2 Boats shall display bow numbers. The organizing authority will supply the numbers (replacements will be charged for). Instructions for their use are in Addendum F. Bow numbers 1-20 will be allocated corresponding with the first 20 of the ISAF World Rankings, per 12 May 2010.
- 9.3 Boats shall display required event sponsor advertising. The organizing authority will supply the advertising. Instructions for their use are in Addendum F.
- 9.4 For split fleet events, boats shall display a coloured band or ribbon corresponding to the fleet to which she has been assigned. The organizing authority will supply the bands or ribbons. Instructions for their use are in Addendum F.
- 9.5 Boats may be required to carry cameras, sound equipment or positioning equipment as specified by the organizing authority.

## **10 COMMUNICATIONS WITH COMPETITORS**

- 10.1 Notices to competitors will be posted on the Official Notice Board located near the regatta office.
- 10.2 When a visual signal is displayed over an area, event, fleet, or match flag, the signal applies only to that area, event, fleet or match. This changes the Race Signals preamble.
- 10.3 Signals ashore will be displayed from the main flagpole at the Regatta Center Medemblik. The signals made ashore for the Skiff, Men's One Person Dinghy and Windsurfer will be displayed from the flagpole at their launching area.
- 10.4 When flag AP is displayed ashore, '1 minute' in the race signal AP is replaced with 'not less than 30 minutes' for Skiff and Windsurfer, with 'not less than 60 minutes' for all other events. For Medal Races and Women's Keelboat Match Racing 'one minute' is replaced with 'not less than 15 minutes'.

## **11 EQUIPMENT AND MEASUREMENT CHECKS**

- 11.1 Details of pre-first race equipment inspection, location and schedules will be posted on the Official Notice Board.
- 11.2 A boat or equipment may be inspected at any time for compliance with the class rules and Sailing Instructions. When instructed by an event equipment inspector the boat shall proceed immediately to a designated area for inspection.

## **12 REPLACEMENT OF CREW OR EQUIPMENT**

- 12.1 Substitution of competitors will not be allowed without prior written approval of the organizing committee and shall comply with any restrictions in the Notice of Race.
- 12.2 Substitution of damaged or lost equipment will not be allowed unless approved by the Race Committee. Requests for substitution shall be made to the Race Committee at the first reasonable opportunity.



### 13 OFFICIAL BOATS

13.1 Official boats will be marked as follows:

Race Committee :	event flag and/or course colour flags
Jury :	flags with 'Jury '
Umpires	flags with 'umpire'
Rescue or Course Marshalls	event flag
First aid/medical :	event flag
Equipment Inspection :	purple flag with M and event flag
Media - press:	PRESS
Organisers:	event flag

13.2 Action by official boats, helicopters and zeppelin shall not be grounds for requesting redress by a boat. This changes RRS 60.1(b).

### 14 SUPPORT BOATS

14.1 Support boats with team leaders, coaches and other support personnel shall stay outside areas where boats are racing from the time of the preparatory signal for the first fleet to start until all boats have finished or the Race Committee signals a postponement, general recall or abandonment.

14.2 Support boats shall not interfere with boats racing or official boats.

14.3 Support boats shall be marked in compliance with NoR 15.2.

### 15 CHANGES TO SAILING INSTRUCTIONS

15.1 Except as permitted in SI 32 any change to the format or schedule of races will be posted by 2100 on the day before it will take effect and any change to the Sailing Instructions will be posted before 0900 on the day it will take effect.

15.2 Any reassignment of events or fleets to racing areas will be posted before 0900 on the day it will take effect, or if flag AP is displayed ashore, 30 minutes before flag AP for that class or fleet is removed.



## Section 2 - Fleet Racing Only

### 20 ADDITIONAL RULES

- 20.1 Appendix P, Special Procedures for Rule 42, will apply.
- 20.2 For the Men's Two Person Dinghy High Performance RRS 44.1 and RRS P2.1 are changed so that the Two-Turns Penalty is replaced by the One-Turn Penalty.
- 20.3 For medal races, ISAF Addendum Q, *Umpired Fleet Racing*, will apply and takes precedence over any conflicting instructions.
- 20.4 Star Olympic crew weight regulations apply so that there will be weighing at the regatta office on Tuesday 25 May during registration and Wednesday 26 May between 0900 and 1000.
- 20.5 All sails of the Two Person Dinghy and Windsurfer shall be stamped before the start of the first race. Sail stamping will take place in the designated areas of that class on Tuesday 26 May 2009 12.00 – 19.00, and on Wednesday 27 May 2009 09.00 – 12.00.

### 21 FORMAT OF RACING

- 21.1 The format is an Opening Series followed by a Medal Race, except for the Paralympic event where there will be no Medal Race. If the event is split into fleets, the Opening Series will be divided into a Qualifying Series and a Final Series. For boats not assigned to compete in the medal race the opening series will be extended by one more race.
- 21.2 All events will race the opening series in multiple fleets if more than 60 boats are registered. The opening series will then consist of a qualifying series and a final series.
- 21.3 The number of fleets for an event is shown in SI Addendum C, Schedule of Races, and may be changed until 2100 on the day before the first scheduled race. An updated version of Addendum C will be posted on the Official Notice Board as part of these Sailing Instructions.
- 21.4 Qualifying Series:
  - 21.4.1 Boats will be assigned to fleets Yellow, Blue, Red, Green, etc. or, as nearly as possible, equal size and ability. Initial assignments will be made by a seeding committee appointed by the Race Committee. Those assignments will be posted by 2100 on the day before the first scheduled race for each event.
  - 21.4.2 Boats will be reassigned to fleets after each day of racing, except if on the first day fewer than two races are completed by all fleets. If all fleets have completed the same number of races, boats will be reassigned on the basis of their ranks in the series. If all fleets have not completed the same number of races, the series scores for reassignment will be calculated for those races, numbered in order of completion, completed by all fleets. For four fleets, and similarly for any other number, reassignments will be made as follows:

<i>Rank in series</i>	<i>Fleet assignment</i>
First	Yellow
Second	Blue
Third	Red
Fourth	Green
Fifth	Green
Sixth	Red
Seventh	Blue
Eighth	Yellow



and so on If two or more boats have the same rank, they will be entered in the left column in the order of fleets in SI 21.4.1.

- 21.4.3 Assignments will be based on the ranking available at 2100 that day regardless of protests or requests for redress not yet decided.
- 21.4.4 If all fleets have not completed the same number of races by the end of a day, the fleets with fewer races will continue racing the following day until all fleets have completed the same number of races. All boats will thereafter race in the new fleets.
- 21.5 Final Series:
- 21.5.1 Boats will be assigned to final-series fleets Gold, Silver, Bronze, Emerald, etc., on the basis of their ranks in the qualifying series. There will be the same number of fleets in the final series as there were in the qualifying series. The final-series fleets will have, as nearly as possible, equal size but none larger than the Gold fleet. For the Men's Two Person Dinghy High Performance event only, the Gold fleet will have 25 boats, regardless of the number of boats entered in the event. Boats with the best qualifying-series ranks will race all final-series races in the Gold fleet, boats with the next-best qualifying series ranks will race in the Silver fleet, etc.
- 21.5.2 Any recalculation of qualifying-series ranking after boats have been assigned to final-series fleets will not affect the assignments except that a redress decision may promote a boat to a higher fleet.
- 21.6 Medal Race:
- 21.6.1 A medal race will be scheduled for each Olympic class with 3 or more opening series races completed.
- 21.6.2 For classes/events with a Medal Race the ten boats ranked highest in the opening series will be assigned to compete in the medal race.
- 21.6.3 Assignments to the medal race scheduled on Sunday May 30 will be based on the ranking available at 0800 on the day of the medal race. For the medal races scheduled on Saturday May 29 the assignments will be based on the final ranking available as soon as possible after the end of protest time. The Protest Committee may extend the time limit.

## 22 SCHEDULE OF RACES

- 22.1 The total number of races scheduled including medal races, if any, is as follows:

Event	Total Number of Races	Maximum Races per Day
Men's Two Person Dinghy High Performance	16	5
Men's One Person Dinghy Heavy Men's Keelboat	9	3
All other Olympic Class Events	11	4
Paralympic Class Events	10	3

- 22.2 The daily race schedule and the scheduled time of the warning signal for the first race, is shown in SI Addendum C. It shall be the sole responsibility of a boat to ensure herself of her correct scheduling and starting times. Failure to do so shall not be grounds for redress.
- 22.3 Except as provided in SI 21.4.4 a scheduled race not being sailed on a day will not be rescheduled as long as the minimum number of races can be achieved.





- 22.4 For single fleet events, the opening series will take place on Wednesday May 26, Thursday May 27, Friday May 28 and Saturday May 29 and the medal race will take place on Saturday May 29 or Sunday May 30. For boats not qualified for the medal race, a last race will take place on the same day as the medal race (for classes, where the medal races are scheduled on Saturday May 29, the last race will be scheduled on Sunday May 30).
- 22.5 For split fleet events, the qualifying series will take place on Wednesday May 26, Thursday May 27 and Friday May 28. The final series will take place on Saturday May 29 and the medal race, if held, will take place on Saturday May 29 or Sunday May 30. The qualifying series will be extended if four races for all fleets have not been completed. For boats not qualified for the medal race, a last race will take place on the same day as the medal race. (For classes, where the medal races are scheduled on Saturday May 29, the last race will be scheduled on Sunday May 30).
- 22.6 After a long postponement, to alert boats that a race or sequence of races will begin soon, the orange starting line flag will be displayed with one sound for at least four minutes before a warning signal is displayed.
- 22.7 On the last day of racing, no warning signal will be made after 1600.

### **23 THE COURSES**

- 23.1 The diagrams in SI Addendum B show the courses, the course designations, the approximate angles between legs, the order in which marks are to be passed, and the side on which each mark is to be left. Race Schedule SI Addendum C shows the course designations to be sailed.
- 23.2 No later than the warning signal, the Race Committee signal boat will display the approximate compass bearing of the first leg.
- 23.3 Courses will not be shortened. This changes RRS 32.

### **24 CHANGE OF THE NEXT LEG OF THE COURSE**

- 24.1 To change the next leg of the course, the Race Committee will move the original mark (or the finishing line) to a new position.
- 24.2 Except at a gate, boats shall pass between the Race Committee boat signalling the change of the next leg and the nearby mark, leaving the mark to port and the Race Committee boat to starboard. This changes rule 28.1.

### **25 PROTESTS AND REQUESTS FOR REDRESS**

- 25.1 Protest forms are available at the race office, located at the International Sailing Center. Protests and requests for redress or reopening shall be delivered there within the appropriate time limit.
- 25.2 For each fleet, the protest time limit is 90 minutes after the last boat has finished the last race of the day.
- 25.3 Notices will be posted within 30 minutes of the protest time limit to inform competitors of hearings in which they are parties or named as witnesses. Hearings will be held in the protest room, located at the International Sailing Center beginning at the time posted. Hearings may be scheduled to begin up to 30 minutes before the end of protest time.
- 25.4 Notices of protests by the Race Committee or Protest Committee will be posted to inform boats under RRS 61.1(b).
- 25.5 A list of boats that have been penalized under Appendix P for breaking RRS 42 will be posted.



- 25.6 Breaches of SI 2 and 9 will not be grounds for a protest by a boat. This changes RRS 60.1(a).
- 25.7 Penalties for breaches of SI 2, 6.2, 6.3, 9, 11.2, 12, 40, 41, 42, and 44, or for breaches of class rules, are at the discretion of the Protest Committee.
- 25.8 On the last day of the qualifying series or opening series, or on the last scheduled day of racing, a request for reopening a hearing shall be delivered
- (a) Within the protest time limit if the requesting party was informed of the decision on the previous day;
- (b) No later than 30 minutes after the requesting party was informed of the decision on that day. This changes RRS 66.
- 25.9 On the last day of the qualifying series or opening series, or on the last scheduled day of racing, a request for redress based on a jury decision shall be delivered no later than 30 minutes after the decision was posted. This changes RRS 62.2.

## 26 SCORING

- 26.1 The Low Point System of RRS Appendix A will apply. RRS B8 is deleted.
- 26.2 A boat starting later than 4 minutes after her starting signal will be scored Did Not Start. This changes RRS A4 and A5.
- 26.3 When fewer than 5 opening series races have been completed, a boat's series score will be the total of her race scores.
- 26.4 When 5 or more opening series races have been completed, a boat's series score will be the total of her race scores excluding her worst score. However, the score from the medal race will not be excluded.
- 26.5 The scoring abbreviation for a discretionary penalty imposed under SI 25.7 will be DPI.
- 26.6 To request correction of an alleged error in posted race or series results, a boat may complete a scoring enquiry form available at the regatta office.
- 26.7 Single Fleet Opening Series:
- 26.7.1 Three races, including the medal race, if any, are required to be completed to constitute a regatta.
- 26.8 Split Fleet Opening Series:
- 26.8.1 Three races are required to be completed to constitute a regatta. These races consist of those qualifying races completed by all fleets, any final races completed by the Gold fleet, and the medal race, if any.
- 26.8.2 For the qualifying series, RRS A4.2 is changed so that those scores are based on the number of boats assigned to the largest fleet.
- 26.8.3 If at the end of the qualifying series some boats have more race scores than others, scores for the most recent races will be excluded so that all boats have the same number of race scores.
- 26.8.4 Final series fleets will be scored separately and different final series fleets need not have completed the same number of final races.
- 26.8.5 For final ranking, boats assigned to the Gold fleet will be ranked higher in the regatta than the boats assigned to the Silver fleet, and so on.
- 26.9 Medal Race:
- 26.9.1 The boats assigned to compete in the medal race will be ranked highest in the regatta except for a boat disqualified from the medal race under RRS 5 or 69.
- 26.9.2 RRS A4.1 is changed so that the points are doubled, and RRS A4.2 is changed so that the scores are based on the number of boats assigned to compete in that race.



26.9.3 For boats assigned to compete in the medal race, ties in the regatta score are broken by the medal race score. This changes RRS A8. For boats with the same points score in the medal race, ties in the regatta score are broken applying RRS A8 to the opening series scores.

26.9.4 A boat assigned to compete in the medal race shall make a genuine effort to start, sail the course and finish. The penalty for a breach of this instruction will be ranking the boat tenth in the regatta. If there are two such boats, they will be ranked ninth and tenth, in order of their opening-series ranks, and so on. This changes RRS A2.

## Section 3 - Match Racing Only

### 30 ADDITIONAL RULES

- 30.1 SI Addendum C, *Rules for the Handling of Boats*, will apply, including for practice racing. The International Elliott 6m Class rules do not apply.
- 30.2 RRS C3.1 is changed so that the attention signal will be made 7 minutes before the first start.
- 30.3 RRS C8.6 is changed to replace "half-point" with "one-point."
- 30.4 A boat may not protest another boat under SI E2.15 or E2.17. This changes RRS60.1. When the umpires decide that a boat has broken SI E2.15 or E2.17, she shall be penalized under RRS C5.2 or RRS C5.3.
- 30.5 For the Women's Keelboat Match Racing event, the crew (including the skipper) shall total three with a maximum total crew weight at registration of 204 kg when wearing at least shorts and shirt.

### 31 IDENTIFICATION AND ASSIGNMENT OF BOATS

- 31.1 Boats will be identified by numbers.
- 31.2 Boats shall display skippers' names on the mainsails as supplied by the organizing authority.
- 31.3 Boats will be allocated by the organizing authority for each stage in accordance with a predetermined draw.
- 31.4 Boats will be exchanged in accordance with SI Addendum C, *Schedule of Races* and SI Addendum D, *Match Racing Pairing List*.
- 31.5 The organizing authority will decide which boats are to be used for each stage and when it decides a boat should not be used, the skipper assigned that boat will be given the temporary use of another boat.

### 32 COMMUNICATIONS WITH COMPETITORS

- 32.1 Any change to the Sailing Instructions made ashore will be posted at least 30 minutes before the start of any match affected.
- 32.2 Any change to the Sailing Instructions made afloat will be signalled by the display of flag 3rd substitute with three sound signals. An umpire will communicate these changes either verbally or in writing.



- 32.3 The sail combination that may be used will be signalled from the RC boat with or before the attention signal:

Signal	Sail Combination to be Used
No Signal	Jib, Mainsail and Spinnaker
Flag Z	Jib and Mainsail only

- 32.4 Other restrictions or instructions may be given to the boats verbally by an umpire. Flag 3rd substitute is not required.

### 33 FORMAT OF RACING

- 33.1 Teams will be paired in accordance with the tables in SI Addendum D.

- 33.2 Format:

#### 33.2.1 Stage 1: Opening Round Robin Series

33.2.1.1 The teams will be divided into 3 equal ability groups based on the ISAF Women Match Race Sailing ranking list 30 days prior to the start of the event. Each group will sail a round robin.

33.2.1.2 The 1st and 2nd team in each group go to the Gold Group (Stage 2).

33.2.1.3 The 3rd and 4th team in each group go to the Repechage (Stage 3).

33.2.1.4 The 5th and 6th team in each group go to the Silver Group (Stage 4).

33.2.1.5 The 7th and 8th team in each group go to the Bronze Group (Stage 5).

#### 33.2.2 Stage 2: Gold Group Round Robin Series

The 6 teams will sail a round robin. The results will be used to determine seeding 1 to 6 in the Quarter Finals (Stage 6).

#### 33.2.3 Stage 3: Repechage Round Robin Series

33.2.3.1 The 6 teams will sail a round robin.

33.2.3.2 The 1st and 2nd team go to the Quarter Finals (Stage 6) and their results are used to determine seeding 7 and 8 in that stage.

33.2.3.3 For the 3rd to 6th team, the result will determine places 9 through 12 in the final standings.

33.2.3.4 A sail-off will only be used for tie breaking if the tie involves the 1st or 2<sup>nd</sup> team and at least one of the other teams. A tie that only involves the 1st and 2nd team will be resolved with a draw. This changes RRS C11.3.

#### 33.2.4 Stage 4: Silver Round Robin Series

The 6 teams will sail a round robin. The results will determine places 13 through 18 in the final standings. A sail-off will not be used for tie breaking. This changes RRS C11.3.

#### 33.2.5 Stage 5: Bronze Group Round Robin Series

The 6 teams will sail a round robin. The results will determine places 19 through 24 in the final standings. A sail-off will not be used for tie breaking. This changes RRS C11.3.



### 33.2.6 Stage 6: Quarter Finals

- 33.2.6.1 The 8 teams will sail knock-out series.
- 33.2.6.2 The teams will be paired such that the 1st team in Stage 2 will sail against the 2nd team in Stage 3, the 2nd team in Stage 2 will sail against the 1st team in Stage 3, the 3rd team in Stage 2 will sail against the 6th team in Stage 2, and the 4th team in Stage 2 will sail against the 5th team in Stage 2.
- 33.2.6.3 The team mentioned first in each of the pairs in SI 33.2.6.2 will be Yellow in the first match.
- 33.2.6.4 The winner of each pair will be the first team to score at least 3 points. The winners go to the Semi Finals (Stage 7) and the losers go to the Sail Offs (Stage 8).

### 33.2.7 Stage 7: Semi Finals

- 33.2.7.1 The 4 teams will sail a knock-out series.
- 33.2.7.2 The winner of the pair mentioned first in SI 33.2.6.2 will sail against the winner of the pair mentioned last. The two remaining winners will sail each other.
- 33.2.7.3 The assignment of sides will be decided through a draw.
- 33.2.7.4 The winner of each pair will be the first team to score at least 3 points. The winners go to the Final and the losers go to the Petit Final (Stage 9)

### 33.2.8 Stage 8: Sail Offs

- 33.2.8.1 The 4 teams will sail knock-out series.
- 33.2.8.2 The assignment of sides in each of these knock-out series will be decided through a draw.
- 33.2.8.3 The losers of Stage 6 will be paired the same way as the winners, see SI 33.2.7.2.
- 33.2.8.4 The winner of each pair will be the first team to score at least 1 point.
- 33.2.8.5 The two winners will go to the 5 to 6 Sail Off, and the two losers will go to the 7 to 8 Sail Off.
- 33.2.8.6 The winner of each pair will be the first team to score at least 1 point. The results will determine places 5 to 8 in the final standings.

### 33.2.9 Stage 9: Final and Petit Final

- 33.2.9.1 The 4 teams will sail knock-out series.
- 33.2.9.2 The assignment of sides will be decided through a draw.
- 33.2.9.3 The first team to score at least 3 points wins the Final. The first team to score at least 2 points wins the Petit Final. The results will determine places 1 to 4 in the final standings.

### 33.3 In a knock-out series between two teams:

- 33.3.1 The teams shall alternate assigned ends for each match. The initial assigned end will be decided in accordance with SI 33.2. This changes RRS C4.1.
- 33.3.2 When the series has been decided, further matches between these two teams will not be sailed, matches will be moved up, eliminating a blank start.
- 33.3.3 Teams shall exchange boats after odd numbered matches of the series.



### 34 SCHEDULE OF RACES

- 34.1 The maximum number of matches scheduled is 186
- 34.2 The daily race schedule and the scheduled time of the attention signal for the first flight, is shown in SI Addendum C, Schedule of Races.
- 34.3 The attention signal for each succeeding flight will be made as soon as practicable.
- 34.4 On the last day of racing, no attention signal will be made after 1630.
- 34.5 When a match cannot start at its intended time, the signals and starts of the following matches will remain as originally scheduled, leaving a blank start for the pair not starting. No starting sequence flags will be displayed for a blank start.
- 34.6 When, in a knock out series, a winner of a particular series has been determined, subsequent starts will be brought forward to eliminate blank starts. Competitors will be so advised verbally by an umpire.
- 34.7 Breakdown and time for repairs:
- 34.7.1 Before the attention signal of a flight, or within two minutes of finishing, or within five minutes of changing into a new boat, whichever is later, a boat may display a green flag to signal breakdown or damage to the boat, her sails or injury to her crew and request a delay to the next start. She shall proceed as soon as possible to close to leeward of the Race Committee starting boat and remain there, unless otherwise directed.
- 34.7.2 The time allowed for repairs shall be at the discretion of the Race Committee.
- 34.7.3 After the attention signal of a flight, a match will not be postponed or abandoned due to breakdown unless the breakdown signal was displayed as required by SI 34.7.1.
- 34.7.4 Except when RRS 62.1(b) applies, failure to effect repairs in the time allowed, or breakdowns after the attention signal shall not be grounds for redress. This changes RRS 62.

### 35 THE COURSE

- 35.1 The diagrams in SI Addendum B show the course, the course designations, the order in which marks are to be passed, and the side on which each mark is to be left.
- 35.2 The course to be sailed is course M2.
- 35.3 RRS 32 is deleted and replaced with: 'After the starting signal the Race Committee may abandon or shorten any match for any reason, after consulting with the match umpires when practical.'

### 36 CHANGE OF THE NEXT LEG OF THE COURSE

- 36.1 Changes to the course will be made by laying a new Mark 1.
- 36.2 RRS 33 and Race Signals are changed as follows:
- 36.2.1 Flag C and a coloured flag or board means 'The windward mark has been moved or replaced. Sail to a mark the same colour as the flag or board.'
- 36.2.2 When a change of course after starting only affects some matches these will be designated by the appropriate numeral pennant.
- 36.3 When a change of course is made for the first leg, the signal will be displayed from the Race Committee starting boat with the preparatory signal for each match affected. The preparatory signal will be followed by a series of repetitive sound signals.
- (b) When a change of course is signalled after the first leg it shall be displayed from a boat in the vicinity of mark 2.





## Section 4 - Other Instructions for All Racing

### 40 TRASH DISPOSAL

As sailors, we seek to protect and restore our oceans and coastal waters. Boats shall not intentionally put trash in the water. Trash may be placed aboard support and Race Committee boats.

### 41 BERTHING and BOAT PARK

When berthed, boats shall be kept in their assigned places in the harbour or boat park.

### 42 HAUL-OUT RESTRICTIONS

Keel boats shall not be hauled out during the regatta except with and according to the terms of prior written permission of the Race Committee.

### 43 DIVING EQUIPMENT AND PLASTIC POOLS

Underwater breathing apparatus and plastic pools or their equivalent shall not be used around keel boats between the preparatory signal of the first race and the end of the regatta.

### 44 RADIO COMMUNICATION

A boat shall neither make radio transmissions while racing nor receive radio communications not available to all boats, except in an emergency or when using equipment provided by the Race Committee. This restriction also applies to mobile telephones.

### 45 PRIZES

45.1 Medals will be awarded to the top 3 boats in each event.

45.2 Hein de Goederen Trophy - for the best Nation

For fleet racing from Saturday onwards, each boat in each race of the gold fleet (or those with one event only) will score points for her nation as follows: First place 15 pts, 2<sup>nd</sup> places 14 pts. Etc.

For Women's Keelboat Match Racing: each boat that made it to the quarter final will score points for her nation as follows:

- according the ranking, when starting the quarter finals: first place 8 points, 2<sup>nd</sup> places 7 pts. Etc.

- according the ranking, when starting the semi finals: first place 4 points, 2<sup>nd</sup> places 3 pts. Etc.

- according the ranking, when starting the finals: first place 2 points, 2<sup>nd</sup> places 1 pts.

- according the final ranking: first place 8 pints, 2<sup>nd</sup> places 7 pts. Etc.

### 46 DISCLAIMER OF LIABILITY

Competitors participate in the regatta entirely at their own risk. See RRS 4, Decision to Race. Neither the organizing authority nor ISAF will accept any liability for material damage or personal injury or death sustained in conjunction with or prior to, during, or after the regatta.

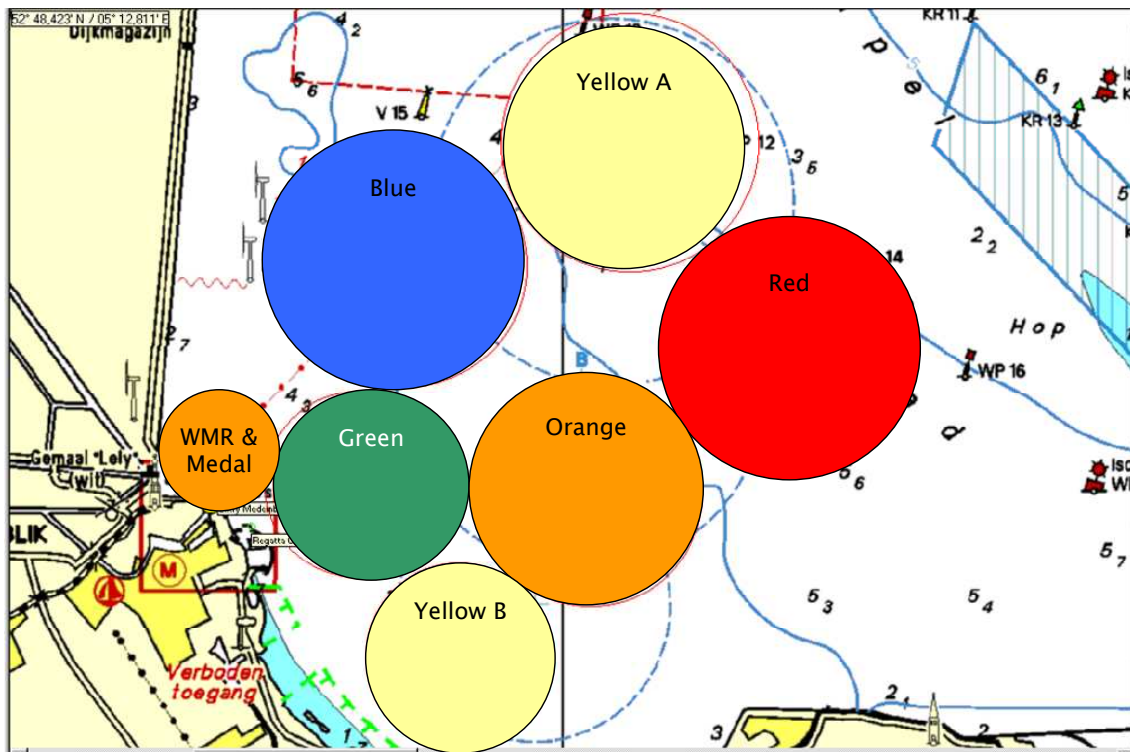
### 47 INSURANCE

Each participating boat shall be insured with valid third-party liability insurance with a minimum cover of 1.500.000 Euros per event or the equivalent.



## ADDENDUM A - RACING AREAS

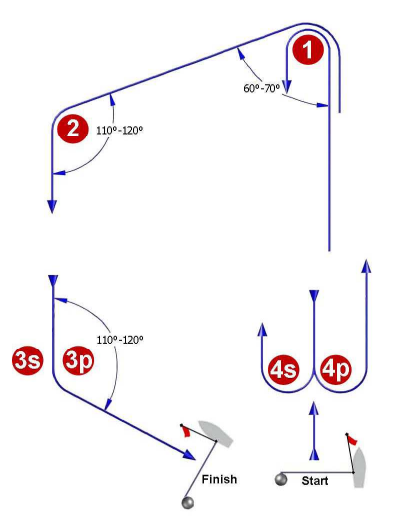
Course	Approximate distance from Harbour Regatta Center	Magnetic Bearing
Yellow A	3.1 nm	052°
Blue	1.7 nm	046°
Red	3.1 nm	081°
Orange	1.9 nm	085°
Green	0.6 nm	037°
Yellow B	1.0 nm	119°
WMR / Medal course	0.4 nm	005°





## ADDENDUM B - COURSE ILLUSTRATIONS

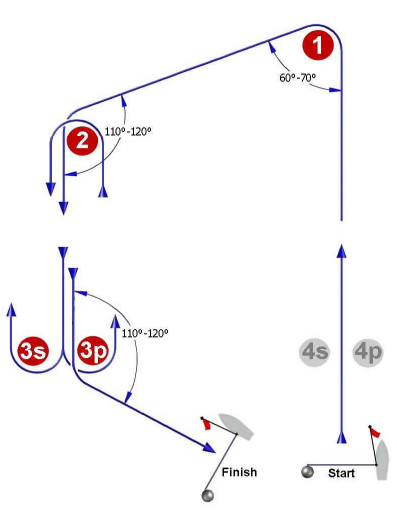
### I



**Course: Inner Trapezoid**

	Marking Rounding Order
I2	Start - 1 - 4s/4p - 1 - 2 - 3p - Finish
I3	Start - 1 - 4s/4p - 1 - 4s/4p - 1 - 2 - 3p - Finish
I4	Start - 1 - 4s/4p - 1 - 4s/4p - 1 - 4s/4p - 1 - 2 - 3p - Finish

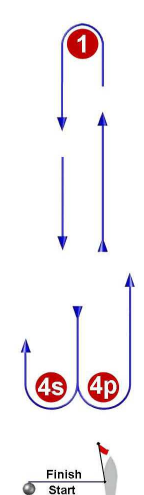
### O



**Course: Outer Trapezoid**

	Marking Rounding Order
O2	Start - 1 - 2 - 3s/3p - 2 - 3p - Finish
O3	Start - 1 - 2 - 3s/3p - 2 - 3s/3p - 2 - 3p - Finish
O4	Start - 1 - 2 - 3s/3p - 2 - 3s/3p - 2 - 3s/3p - 2 - 3p - Finish

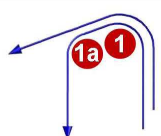
### L



**Course: Windward/Leeward**

	Marking Rounding Order
L2	Start - 1 - 4s/4p - 1 - Finish
L3	Start - 1 - 4s/4p - 1 - 4s/4p - 1 - Finish
L4	Start - 1 - 4s/4p - 1 - 4s/4p - 1 - 4s/4p - 1 - Finish

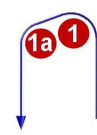
### IA



**Course: Same As Course I Except With Offset Mark 1A**

	Marking Rounding Order
IA2	Start - 1 - 1a - 4s/4p - 1 - 1a - 2 - 3p - Finish
IA3	Start - 1 - 1a - 4s/4p - 1 - 1a - 4s/4p - 1 - 1a - 2 - 3p - Finish
IA4	Start - 1 - 1a - 4s/4p - 1 - 1a - 4s/4p - 1 - 1a - 4s/4p - 1 - 1a - 2 - 3p - Finish

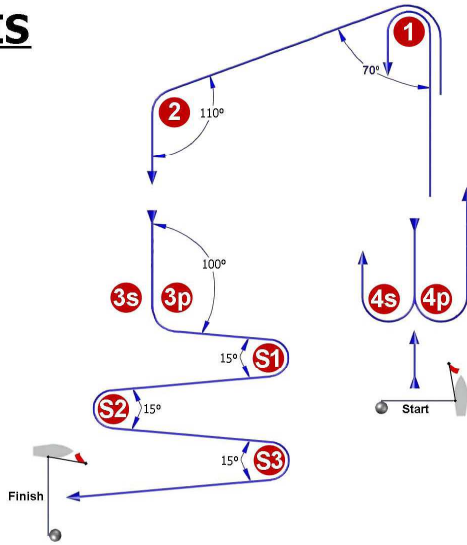
### LA



**Course: Same As Course L Except With Offset Mark 1A**

	Marking Rounding Order
LA2	Start - 1 - 1a - 4s/4p - 1 - 1a - Finish
LA3	Start - 1 - 1a - 4s/4p - 1 - 1a - 4s/4p - 1 - 1a - Finish
LA4	Start - 1 - 1a - 4s/4p - 1 - 1a - 4s/4p - 1 - 1a - 4s/4p - 1 - 1a - Finish

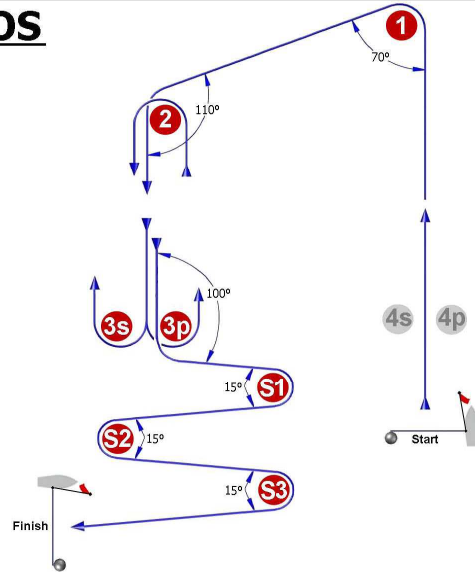
## IS



Course: Inner Slalom

	Marking Rounding Order
IS2	Start - 1 - 4s/4p - 1 - 2 - 3p - S1 - S2 - S3 - Finish
IS3	Start - 1 - 4s/4p - 1 - 4s/4p - 1 - 2 - 3p - S1 - S2 - S3 - Finish
IS4	Start - 1 - 4s/4p - 1 - 4s/4p - 1 - 4s/4p - 1 - 2 - 3p - S1 - S2 - S3 - Finish

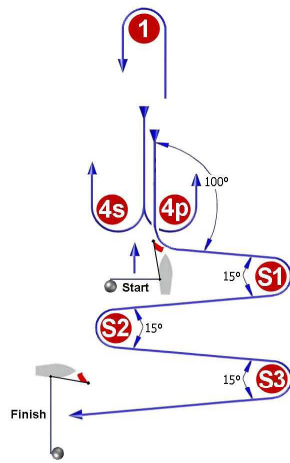
## OS



Course: Outer Slalom

	Marking Rounding Order
OS2	Start - 1 - 2 - 3s/3p - 2 - 3p - S1 - S2 - S3 - Finish
OS3	Start - 1 - 2 - 3s/3p - 2 - 3s/3p - 2 - 3p - S1 - S2 - S3 - Finish
OS4	Start - 1 - 2 - 3s/3p - 2 - 3s/3p - 2 - 3s/3p - 2 - 3p - S1 - S2 - S3 - Finish

## LS



Course: Windward/Leeward With Slalom Finish

	Marking Rounding Order
LS2	Start - 1 - 4s/4p - 1 - 4p - S1 - S2 - S3 - Finish
LS3	Start - 1 - 4s/4p - 1 - 4s/4p - 1 - 4p - S1 - S2 - S3 - Finish
LS4	Start - 1 - 4s/4p - 1 - 4s/4p - 1 - 4s/4p - 1 - 4p - S1 - S2 - S3 - Finish

## M



**Note:**  
For the purposes  
of RRS C7, Mark 1  
will be the windward  
mark and Mark 2 will  
be the leeward mark.

Course: Windward/Leeward With Marks To Starboard

	Marking Rounding Order
M1	Start - 1 - Finish
M2	Start - 1 - 2 - 1 - Finish
M3	Start - 1 - 2 - 1 - 2 - 1 - Finish
M4	Start - 1 - 2 - 1 - 2 - 1 - 2 - 1 - Finish



## RACING SCHEDULES

LASER RADIAL 1  
LASER RADIAL 2  
FINN 1  
FINN 2

Yellow streamer  
Blue streamer  
Yellow streamer  
Blue streamer

LASER 1 Yellow streamer  
LASER 2 Blue streamer  
LASER 3 Red streamer

470 M 1 Yellow streamer  
470 M 2 Blue streamer

49er 1 Yellow streamer  
49er 2 Blue streamer  
RS:X M 1 Yellow streamer  
RS:X M 2 Blue streamer

ORANGE KWS, Piet van der Zwaag LASER RADIAL / FINN				BLUE Hollandia, Erik Vliegenthart 49er / LASER				RED RZV, Theo Smits 470 M & W				YELLOW A KNZ&RV, Michiel Poulie STAR / 2.4 mR				GREEN Frisia / De Kaag, Tom Erik van Strien 49er / RS:X M & W				Match Race Uitdam, Alex Hoeve WMR (Elloit 6m)		
																10:00 WMR M2						
																following flight asap						
11:00	LASER RADIAL 1 LASER RADIAL 2	YELLOW BLUE	R1 R1	O2 I2	11:00	49er 2	BLUE	R1	L2	11:00	470 M 470 M	YELLOW BLUE	R1 R1	O2 I2	11:00	STAR	R1	LA2				
				ASAP 49er 2 BLUE R2 L2												11:30 49er 1 YELLOW R1 L2						
				ASAP 49er 2 BLUE R3 L2												ASAP 49er 1 YELLOW R2 L2						
12:10	LASER RADIAL 1 LASER RADIAL 2	YELLOW BLUE	R2 R2	O2 I2	ASAP	49er 2	BLUE	R4	L2	12:10	470 M 470 M	YELLOW BLUE	R2 R2	O2 I2	12:30	STAR	R2	LA2	ASAP 49er 1 YELLOW R3 L2			
																ASAP 49er 1 YELLOW R4 L2						
13:20	LASER RADIAL 1 LASER RADIAL 2	YELLOW BLUE	R3 R3	O2 I2					13:20	470 M 470 M	YELLOW BLUE	R3 R3	O2 I2									
												<b>YELLOW B</b>										
15:00	FINN 1 FINN 2	YELLOW BLUE	R1 R1	O2 I2	14:00	LASER 1 LASER 2 LASER 3	YELLOW BLUE RED	R1 R1 R1	O2 I2 I2	14:30	470 W		R1	I2	15:00	2.4 mR	R1	LA2	14:30 RS:X M 1 YELLOW R1 OS2 RS:X M 2 BLUE R1 IS2 RS:X W R1 IS2			
				15:20 LASER 1 YELLOW R2 O2 LASER 2 BLUE R2 I2 LASER 3 RED R2 I2												15:20 RS:X M 1 YELLOW R2 OS2 RS:X M 2 BLUE R2 IS2 RS:X W R2 IS2						
16:20	FINN 1 FINN 2	YELLOW BLUE	R2 R2	O2 I2					16:50	470 W		R3	I2	16:00	2.4 mR	R2	LA2	16:10 RS:X M 1 YELLOW R3 OS2 RS:X M 2 BLUE R3 IS2 RS:X W R3 IS2				
				16:40 LASER 1 YELLOW R3 O2 LASER 2 BLUE R3 I2 LASER 3 RED R3 I2																		



RACING SCHEDULES

LASER RADIAL 1  
LASER RADIAL 2  
FINN 1  
FINN 2

Yellow streamer  
Blue streamer  
Yellow streamer  
Blue streamer

LASER 1 Yellow streamer  
LASER 2 Blue streamer  
LASER 3 Red streamer

470 M 1 Yellow streamer  
470 M 2 Blue streamer

49er 1 Yellow streamer  
49er 2 Blue streamer  
RS:X M 1 Yellow streamer  
RS:X M 2 Blue streamer

ORANGE KWS, Piet van der Zwaag LASER RADIAL / FINN			BLUE Hollandia, Erik Vliegenthart 49er / LASER			RED RZV, Theo Smits 470 M & W			YELLOW A KNZ&RV, Michiel Poulie STAR / 2.4 mR			GREEN Frisia / De Kaag, Tom Erik van Strien 49er / RS:X M & W			Match Race Uitdam, Alex Hoeve WMR (Eloit 6m)	
10:00	LASER RADIAL 1 LASER RADIAL 2	YELLOW R4 O2 BLUE R4 I2	10:00	49er 2	BLUE R5 L2				10:00	STAR	R3 LA2			9:30	WMR M2	
				ASAP 49er 2	BLUE R6 L2							10:30	49er 1	YELLOW R5 L2	following flight asap	
				ASAP 49er 2	BLUE R7 L2	11:00	470 M	YELLOW R4 O2				ASAP	49er 1	YELLOW R6 L2		
11:10	LASER RADIAL 1 LASER RADIAL 2	YELLOW R5 O2 BLUE R5 I2		ASAP 49er 2	BLUE R8 L2		470 M	BLUE R4 I2				ASAP	49er 1	YELLOW R7 L2		
									11:30	STAR	R4 LA2	ASAP	49er 1	YELLOW R8 L2		
12:20	LASER RADIAL 1 LASER RADIAL 2	YELLOW R6 O2 BLUE R6 I2				12:10	470 M	YELLOW R5 O2								
							470 M	BLUE R5 I2								
									YELLOW B							
				13:00	LASER 1	YELLOW R4 O2										
					LASER 2	BLUE R4 I2										
					LASER 3	RED R4 I2	13:20	470 M	YELLOW R6 O2			14:30	RS:X M 1	YELLOW R4 OS2		
								470 M	BLUE R6 I2				RS:X M 2	BLUE R4 IS2		
14:00	FINN 1 FINN 2	YELLOW R3 O2 BLUE R3 I2	14:20	LASER 1	YELLOW R5 O2		14:30	470 W	R4 I2			14:00	2.4 mR	R4 LA2		
				LASER 2	BLUE R5 I2								RS:X W	R4 IS2		
				LASER 3	RED R5 I2											
15:20	FINN 1 FINN 2	YELLOW R4 O2 BLUE R4 I2	15:40	LASER 1	YELLOW R6 O2	15:40	470 W	R5 I2				15:20	RS:X M 1	YELLOW R5 OS2		
				LASER 2	BLUE R6 I2								RS:X M 2	BLUE R5 IS2		
				LASER 3	RED R6 I2								RS:X W	R5 IS2		
							16:50	470 W	R6 I2			16:10	RS:X M 1	YELLOW R6 OS2		
													RS:X M 2	BLUE R6 IS2		
													RS:X W	R6 IS2		



RACING SCHEDULES

LASER RADIAL 1 Yellow streamer  
 LASER RADIAL 2 Blue streamer  
 FINN 1 Yellow streamer  
 FINN 2 Blue streamer

LASER 1 Yellow streamer  
 LASER 2 Blue streamer  
 LASER 3 Red streamer

470 M 1 Yellow streamer  
 470 M 2 Blue streamer

49er 1 Yellow streamer  
 49er 2 Blue streamer  
 RS:X M 1 Yellow streamer  
 RS:X M 2 Blue streamer

<b>ORANGE</b> KWS, Piet van der Zwaag LASER RADIAL / FINN			<b>BLUE</b> Hollandia, Erik Vliegenthart 49er / LASER			<b>RED</b> RZV, Theo Smits 470 M & W			<b>YELLOW A</b> KNZ&RV, Michiel Poulie STAR / 2.4 mR			<b>GREEN</b> Frisia / De Kaag, Tom Erik van Strien 49er / RS:X M & W			<b>Match Race</b> Uitdam, Alex Hoeve WMR (Elloit 6m)	
10:00	LASER RADIAL 1 LASER RADIAL 2	YELLOW R7 O2 BLUE R7 I2	10:00	49er 2 ASAP 49er 2 ASAP 49er 2 ASAP 49er 2	BLUE R9 L2 BLUE R10 L2 BLUE R11 L2 BLUE R12 L2				10:00	STAR   STAR	R5   R6	LA2   LA2			9:30	WMR M2
11:10	LASER RADIAL 1 LASER RADIAL 2	YELLOW R8 O2 BLUE R8 I2				11:00	470 M 470 M	YELLOW R7 O2 BLUE R7 I2					10:30	49er 1 ASAP 49er 1 ASAP 49er 1 ASAP 49er 1	YELLOW R9 L2 YELLOW R10 L2 YELLOW R11 L2 YELLOW R12 L2	following flight asap
13:00	FINN 1 FINN 2	YELLOW R5 O2 BLUE R5 I2	13:00	LASER 1 LASER 2 LASER 3	YELLOW R7 O2 BLUE R7 I2 RED R7 I2											
			14:20	LASER 1 LASER 2 LASER 3	YELLOW R8 O2 BLUE R8 I2 RED R8 I2	13:20	470 W	R7 I2					13:30	RS:X M 1 RS:X M 2 RS:X W	YELLOW R7 OS2 BLUE R7 IS2 R7 IS2	
15:40	FINN 1 FINN 2	YELLOW R6 O2 BLUE R6 I2				14:30	470 W	R8 I2					14:20	RS:X M 1 RS:X M 2 RS:X W	YELLOW R8 OS2 BLUE R8 IS2 R8 IS2	
													15:00	2.4 mR	R7 LA2	
									<b>YELLOW B</b>							



RACING SCHEDULES

LASER RADIAL Gold  
LASER RADIAL Silver  
FINN Gold  
FINN Silver

Yellow streamer  
Blue streamer  
Yellow streamer  
Blue streamer

LASER Gold  
LASER Silver  
LASER bronze

Yellow streamer  
Blue streamer  
Red streamer

470 M Gold  
470 M Silver

Yellow streamer  
Blue streamer

49er Gold  
49er Silver  
RS:X M Gold  
RS:X M Silver

Yellow streamer  
Blue streamer  
Yellow streamer  
Blue streamer

ORANGE KWS, Piet van der Zwaag LASER RADIAL / FINN		BLUE Hollandia, Erik Vliegenthart 49er / LASER		RED RZV, Theo Smits 470 M & W		YELLOW A KNZ&RV, Michiel Poulie STAR / 2.4 mR		GREEN Frisia / De Kaag, Tom Erik van Strien 49er / RS:X M & W		Match Race Uitdam, Alex Hoeve WMR (Eloit 6m)	
10:00	LASER RADIAL Gold LASER RADIAL Silver	YELLOW R9 O2 BLUE R9 I2	10:00 49er Silver ASAP 49er Silver ASAP 49er Silver	BLUE R13 L2 BLUE R14 L2 BLUE R15 L2	10:00 470 M Gold 470 M Silver	YELLOW R9 O2 BLUE R9 I2	10:00 STAR   11:30 STAR	R7 LA2	10:30 49er Gold ASAP 49er Gold ASAP 49er Gold	YELLOW R13 L2 YELLOW R14 L2 YELLOW R15 L2	9:30 WMR M2  following flight asap
11:10	LASER RADIAL Gold LASER RADIAL Silver	YELLOW R10 O2 BLUE R10 I2			11:10 470 M Gold 470 M Silver	YELLOW R10 O2 BLUE R10 I2					
					12:20 470 W	R9 I2					
							YELLOW B				
13:00	FINN Gold FINN Silver	YELLOW R7 O2 BLUE R7 I2	13:00 LASER Gold LASER Silver LASER bronze	YELLOW R9 O2 BLUE R9 I2 RED R9 I2	13:30 470 W	R10 I2			13:30 RS:X M 1 RS:X M 2 RS:X W	YELLOW R9 OS2 BLUE R9 IS2 R9 IS2	
14:20	FINN Gold FINN Silver	YELLOW R8 O2 BLUE R8 I2	14:20 LASER Gold LASER Silver LASER bronze	YELLOW R10 O2 BLUE R10 I2 RED R10 I2			14:00 2.4 mR	R8 LA2	14:20 RS:X M 1 RS:X M 2 RS:X W	YELLOW R10 OS2 BLUE R10 IS2 R10 IS2	
							15:00 2.4 mR	R9 LA2			
<b>MEDAL RACE</b>		<b>ORANGE medal course A</b>									
18:00	470 M	TOP 10 R11 L3									
19:00	470 W	TOP 10 R11 L3									



RACING SCHEDULES

FINN Gold Yellow streamer  
 FINN Silver Blue streamer  
 LASER Gold Yellow streamer  
 LASER Silver Blue streamer  
 LASER bronze Red streamer

470 M Gold Yellow streamer  
 470 M Silver Blue streamer  
 LASER RADIAL Gold Yellow streamer  
 LASER RADIAL Silver Blue streamer

49er Gold Yellow streamer  
 49er Silver Blue streamer  
 RS:X M Gold Yellow streamer  
 RS:X M Silver Blue streamer

ORANGE medal course A KWS, Piet van der Zwaag MEDAL RACES					BLUE Hollandia, Erik Vliegenthart FINN / LASER				RED RZV, Theo Smits 470 M & W / LASER RADIAL				YELLOW A KNZ&RV, Michiel Poulie STAR / 2.4mR			GREEN Frisia / De Kaag, Tom Erik van Strien 49er / RS:X M & W				Match Race Uitdam, Alex Hoeve WMR (Elloit 6m)					
09:30	RS:X MEN	TOP 10	R11	LS3																9:30	WMR	M2			
10:10	RS:X WOMEN	TOP 10	R11	LS3	10:30	FINN Gold	YELLOW	R9	O2	10:30	470 M Gold	YELLOW	R11	O2	10:00	STAR	R9	LA2	10:30	49er Gold	YELLOW	R16	L2	following flight asap	
10:50	LASER	TOP 10	R11	L3		FINN Silver	BLUE	R9	I2		470 M Silver	BLUE	R11	I2						11:10	49er Silver	BLUE	R16		L2
11:30	LASER RADIAL	TOP 10	R11	L3							470 W		R11	I2	YELLOW B										
12:10	FINN	TOP 10	R9	L3	12:00	LASER Gold	YELLOW	R11	O2											12:00	RS:X MEN Gold	YELLOW	R11		OS2
12:40	STAR	TOP 10	R9	L3		LASER Silver	BLUE	R11	I2	12:30	LASER RADIAL Gold	YELLOW	R11	O2							RS:X MEN Silver	BLUE	R11		IS2
13:20	49er	TOP 10	R16	L3		LASER bronze	RED	R11	I2		LASER RADIAL Silver	BLUE	R11	I2	13:30	2.4 mR	R10	LA2			RS:X WOMEN		R11		IS2



## ADDENDUM D - WOMEN'S KEELBOAT MATCH RACING PAIRING LISTS

The pairing lists for each stage will be posted on due time on the Official Notice Board.

## ADDENDUM E - HANDLING OF PROVIDED BOATS

### 1 GENERAL

While all reasonable steps are taken to equalise the boats variations will not be grounds for redress. This changes RRS 62.

### 2 PROHIBITED ITEMS and ACTIONS

Except in an emergency or in order to prevent damage or injury, or when directed by an umpire otherwise the following are prohibited.

- 2.1 Any additions, omissions or alterations to the equipment supplied.
- 2.2 The use of any equipment for a purpose other than that intended or specifically permitted.
- 2.3 The replacement of any equipment without the approval of the RC.
- 2.4 Sailing the boat in a manner that it is reasonable to predict that significant further damage would result.
- 2.5 Moving equipment from its normal stowage position except when being used.
- 2.6 Boarding a boat without prior permission.
- 2.7 Taking a boat from its berth or mooring without having paid the required damage deposit or having permission from the RC, or, on race days, while 'AP' is displayed ashore.
- 2.8 Hauling out a boat or cleaning surfaces below the waterline.
- 2.9 Using a flattener as a reef.
- 2.10 Attaching lines to the fabric of spinnakers.
- 2.11 Perforating sails, even to attach tell tales.
- 2.12 Radio transmission (including mobile telephones), except to report damage or in response to a request from the RC.
- 2.13 Adjusting or altering the tension of standing rigging.
- 2.14 The use of electronic instruments other than compass and watches.
- 2.15 Using the spinnaker pole to wing out the foresail.
- 2.16 Marking directly on the hull or deck with permanent ink.
- 2.17 The use of the shrouds (including any inner shrouds) above the lower bottle screw (turnbuckle) to facilitate tacking or gybing, or to aid the projection of a crew member outboard is prohibited.
- 2.18 Except in an emergency or when directed by a race official, no person from a team's support crew shall go onboard a racing boat or physically assist a team with preparations or repairs.





### 3 PERMITTED ITEMS and ACTIONS

The following are permitted.

- 3.1 Taking on board the following equipment:
  - (a) basic hand tools
  - (b) adhesive tape
  - (c) line (elastic or otherwise of 4 mm diameter or less)
  - (d) marking pens
  - (e) tell tale material
  - (f) watch, timers and hand held compass
  - (g) shackles and clevice pins
  - (h) velcro tape
  - (i) spare flags
- 3.2 Using the items in 3.1 to:
  - (a) prevent fouling of lines, sails and sheets
  - (b) attach tell tales
  - (c) prevent sails being damaged or falling overboard
  - (d) mark control settings
  - (e) make minor repairs and permitted adjustments
  - (f) make signals as per RRS Appendix C6
- 3.3 Fixing a spinnaker sheet catcher at the bow, providing that it does not extend the length of the boat more than 100 mm and does not require any repair after removal.
- 3.4 Fixing a watch or timer to the mast providing that it does not require any repair after removal.

### 4 MANDATORY ITEMS and ACTIONS

The following are mandatory.

- 4.1 The completion of a written damage report before leaving a boat and submitting it to the RC, even if no damage or loss is recorded. Reports shall include any evidence of matters which could cause damage or disadvantage to the boat in future matches.
- 4.2 At the end of each sailing day:
  - (a) folding, bagging and placement of the sails as directed.
  - (b) leaving the boat in the same state of cleanliness as when first boarded that day.
- 4.3 At the end of the final day for a particular boat, cleaning the boat (cabin and decks), removing all trash and removing all tape and marks.
- 4.4 Any request to alter, in any way, the equipment on a boat shall be in writing and worded to permit a yes/no answer.
- 4.5 Complying with any regulations, including speed restrictions and navigation marks, while leaving or returning to the berth or mooring.
- 4.6 A breach of items 4.2 and 4.3 will be considered as damage and the cost of rectification will be deducted from the damage deposit.
- 4.7 When towing, the tow line should be attached to the forward pad eye (not the mast). If multiple boats on one tow, the after attachment should run through the small pad eye on the transom and attached to the pad eye just aft of the main sheet track.



## ADDENDUM Q - UMPIRED FLEET RACES

Under rule 86.2 and Regulation 31.1.3, the ISAF has approved the use of these Sailing Instructions as an addendum to the Sailing Instructions in World Championship Grade, Grade1 and Grade C1 events from December 14, 2009 to the end of 2010, for umpired fleet racing in the last race of each series for the Olympic classes. Similar events are also encouraged to use the addendum. This can be done under rule 86.3 if the national authority prescribes that rule changes are allowed for the purpose of development and testing. Please note that the national authority may prescribe that such changes require its approval. Events that use this addendum are requested to provide feedback to the ISAF to support further development.

Races may be sailed under the Sailing Instructions in this addendum only if the notice of race so states and the addendum is included in the Sailing Instructions.

Use of this addendum is recommended for races in which about ten one-design boats compete with umpires present. There should be one umpire boat for every three or four boats in the fleet.

These Sailing Instructions change the definitions Finish and Proper Course, and rules 20.1, 28.1, 44, 60, 61, 62, 63, 64.1, 65, 66, 70, 78.3 and B7.

### Q1 CHANGES TO RACING RULES

Additional changes to rules are made in instructions Q2, Q3, Q4, and Q5.

#### Q1.1 Changes to the Definitions and the Rules of Part 2 and Part 4

- (a) The definition Finish is changed to  
A boat *finishes* when any part of her hull, or crew or equipment in normal position, crosses the finishing line in the direction of the course from the last *mark*, either for the first time or after completing any penalties or, under rule 28.1, after correcting an error made at the finishing line.
- (b) Add to the definition Proper Course: 'A boat taking a penalty or manoeuvring to take a penalty is not sailing a *proper course*.'
- (c) When rule 20.1 applies, the following arm signals are required in addition to the hails:  
(1) for 'Room to tack', repeatedly and clearly pointing to windward; and  
(2) for 'You tack', repeatedly and clearly pointing at the other boat and waving the arm to windward.

Instruction Q1.1(c) does not apply to boards.

#### Q1.2 Changes to Rules Involving Protests, Requests for Redress, Penalties and Exoneration

- (a) The first sentence of rule 44.1 is replaced with: 'A boat may take a One-Turn Penalty when she may have broken a rule of Part 2 (except rule 14 when she has caused damage or injury) or rule 31 while *racing*.'
- (b) For boards, the One-Turn Penalty is one 360° turn with no requirement for a tack or a gybe.
- (c) Rule 60.1 is replaced with 'A boat may protest another boat or request redress provided she complies with instructions Q2.1 and Q2.4.'
- (d) The third sentence of rule 61.1(a) and all of rule 61.1(a)(2) are deleted. Rule B7 is deleted.
- (e) Rule 62.1(a), (b) and (d) are deleted.
- (f) Rule 64.1(c) is changed so that the provision for exonerating a boat may be applied by the umpires without a hearing, and it takes precedence over any conflicting instruction of this addendum.



## **Q2 PROTESTS AND REQUESTS FOR REDRESS BY BOATS**

- Q2.1** While racing, a boat may protest another boat under a rule of Part 2, except rule 14, but only for an incident in which she was involved, or under rule 31. To do so she shall hail 'Protest' and conspicuously display a red flag at the first reasonable opportunity for each. She shall remove the flag before, or at the first reasonable opportunity after a boat involved in the incident has taken a penalty voluntarily or after an umpire's decision. However, a board need not display a red flag.
- Q2.2** A boat that protests as provided in instruction Q2.1 is not entitled to a hearing. Instead, a boat involved in the incident may acknowledge breaking a rule by promptly taking a One-Turn Penalty. If no boat takes a penalty voluntarily, an umpire will signal a decision as provided in instruction Q3.1.
- Q2.3** At the finishing line the Race Committee will display each boat's sail number and her finishing place or scoring abbreviation. After this has been done for all boats, the Race Committee will promptly display flag B with one sound. Two minutes later flag B will be removed with one sound.
- Q2.4** A boat intending to
- protest another boat under a rule other than instruction Q3.2 or Q4.2(a), rule 42, 44 or a rule listed in instruction Q2.1,
  - protest another boat under rule 14 if there was contact that caused damage or injury, or
  - request redress shall hail the Race Committee before or during the display of flag B. The same time limit applies to protests under instructions Q5.5 and Q5.6. The Protest Committee may extend the time limit if there is good reason to do so.
- Q2.5** The Race Committee will promptly inform the Protest Committee about any protests or requests for redress made under instruction Q2.4.

## **Q3 UMPIRE SIGNALS AND IMPOSED PENALTIES**

- Q3.1** An umpire will signal a decision as follows:
- A green and white flag with one long sound means 'No penalty.'
  - A red flag with one long sound means 'A penalty is imposed on one or more boats.' The umpire will hail or signal to identify each penalized boat.
  - A black flag with one long sound means 'A boat is disqualified.' The umpire will hail or signal to identify the boat disqualified.
- Q3.2**
- A boat penalized under instruction Q3.1(b) shall take a One-Turn Penalty.
  - A boat disqualified under instruction Q3.1(c) shall promptly leave the course area.



#### **Q4 PENALTIES AND PROTESTS INITIATED BY AN UMPIRE; ROUNDING OR PASSING MARKS**

##### **Q4.1** When a boat

- (a) breaks rule 31 and does not take a penalty,
- (b) gains an advantage despite taking a penalty,
- (c) deliberately breaks a rule,
- (d) commits a breach of sportsmanship, or
- (e) fails to comply with instruction Q3.2 or to take a penalty when required to do so by an umpire, an umpire may penalize her without a protest by another boat. The umpire may impose one or more penalties to be taken under rule 44, each signalled by displaying a red flag and hailing the boat, or disqualify her under instruction Q3.1(c), or report the incident to the Protest Committee for further action.

**Q4.2** (a) A boat shall not round or pass a mark on the wrong side. If she does so, she may correct her error as provided in rule 28.1 only if she does so before she rounds or passes the next mark or finishes.

- (b) When a boat breaks instruction Q4.2(a) and fails to correct her error before rounding or passing the next mark or finishing, an umpire may disqualify her under instruction Q3.1(c).

**Q4.3** An umpire who decides, based on his own observation or a report received from any source, that a boat may have broken a rule, other than instruction Q3.2 or Q4.2(a) or a rule listed in instruction Q2.1, may inform the Protest Committee for its action under rule 60.3. However, he will not inform the Protest Committee of an alleged breach of rule 14 unless there is damage or injury.

#### **Q5 PROTESTS; REQUESTS FOR REDRESS OR REOPENING; APPEALS; OTHER PROCEEDINGS**

**Q5.1** No proceedings of any kind may be taken in relation to any action or non-action by an umpire.

**Q5.2** A boat may not base an appeal on an alleged improper action, omission or decision of the umpires or the Protest Committee. In rule 66 the third sentence is changed to 'A party to the hearing may not ask for a reopening.'

- Q5.3** (a) Protests and requests for redress need not be in writing.
- (b) The Protest Committee may take evidence and conduct the hearing in any way it considers appropriate and may communicate its decision orally.
- (c) If the Protest Committee decides that a breach of a rule has had no effect on the outcome of the race, it may impose a penalty of points or fraction of points or make another arrangement it decides is equitable, which may be to impose no penalty.

**Q5.4** The Race Committee will not protest a boat.

**Q5.5** The event measurement committee, or, when no event measurement committee is appointed, the event measurer or equipment inspector for the event, may protest a boat for an alleged breach of a measurement rule or rule 43.1(a) or 43.1(b).

**Q5.6** The Protest Committee may protest a boat under rule 60.3. However, it will not protest a boat for breaking instruction Q3.2 or Q4.2(a), a rule listed in instruction Q2.1, or rule 14 unless there is damage or injury.



## ADDENDUM F

### ADDITIONAL PRESCRIPTIONS & IMPORTANT INFORMATION

1. Additional Identification and Advertising.
- 1.1 While racing, boats shall display bow numbers and advertising for the Event sponsor(s). The organizing authority will supply the first set of numbers and advertising. Spare numbers and advertising are available at cost, Euro 3 per digit, and Euro 3 per advertising sticker, at the regatta office. The allocated bow numbers (no 1-20 corresponding with the first 20 of the ISAF World Rankings, per May 12 2010) and advertising sticker supplied shall not be reduced in size and shall be affixed with the forward edge no further than 10 cm from the edge of the deck and the bow of the boat on both sides of the hull(s). RS:X shall not be required to have a bow number but shall display the Event sponsor(s) advertising sticker just above the wishbone and the forward edge no further away than 10cm from the luff sleeve, on both sides of the sail.
- 1.2 Each boat is solely responsible for carrying the bow numbers and advertising during racing. If a boat does not fulfil this instruction the jury or Race Committee may report this to the jury. At the first infringement the jury will give a warning, at a subsequent infringement the boat shall be disqualified without a hearing. This changes rule 63.1. A list of infringements of this instruction will be posted at the notice board.
- 1.3 The coloured marks as per SI 9.1 shall be clearly displayed on the front part of the hull and top half of the main sail.
- 1.4 The coloured ribbon for the group identification will be attached to the top of the mast except the 49er where it will be attached to the end of the boom.
- 1.5 The bow numbers shall be in front of the event sponsor sticker, so that they are attached between the event sponsor sticker and the edge of the bow. If supplied, both or all three numbers must be displayed.

delta lloyd 001





## 2 Shore Locations

Boats are allocated to the following shore locations:



### REGATTA OFFICE

Regatta Center Medemblik

Vooroever 1

1671 SG Medemblik

Telephone + 31 (0) 227-540444

Fax + 31 (0) 227-540412

Opening Hours of the Regatta-Office: 0800 until one hour after the end of the Protest Time.

## 3 Team Leaders Meeting

- The first team leaders meeting will be held at 1900 on Tuesday May 25 2010 in the Regatta Center Medemblik. Team Leaders meetings will be held at 0800 every day in or near the Regatta Center Medemblik from Wednesday onwards.
- The first meeting for umpires and competitors of the Women's Keelboat Match Racing will be held on Tuesday May 25 at 1930 in the Regatta Center Medemblik. Meetings for umpires and competitors of the Women's Keelboat Match Racing will be held at 0815 every day in or near the Regatta Center Medemblik from Wednesday onwards.

## 4 Official List of Participants

The Official Lists of participants will be posted on the score board after completion of registration. Participant lists will be available at the Regatta Center Medemblik.

## 5 Weather Forecast

On each racing day a weather forecast will be posted on the Official Notice Board.



#### 4 Race Winner

The winners of each Race and the leading team of each class shall report to the Press Center in the Regatta Center Medemblik within 30 minutes after returning to the harbour.

#### 5 Results

Results of each race will be available at the Regatta Center Medemblik. Final results (after protest hearings) will be posted as soon as possible.

#### 6 Keelboat Docking

Stars and 2.4 mR shall only be docked at the designated docking areas in Regatta Center Medemblik Harbour. Boats found elsewhere will be removed at the owner's risk. The dock master's instructions are to be strictly followed.

#### 7 Dinghy Parking

Boats shall only be parked at the designated parking areas for each class. The beach master's (Hans van de Bergh, Gerard Wallet, Hein Neijenhuis, Tineke Neijenhuis) instructions are to be strictly followed.

#### 8 Race Officers

Principal Race officer: Marinus Blickman

Green	Tom Erik van Strien
Blue	Erik Vliegenthart
Red	Theo Smits
Yellow	Michiel Poulie
Orange	Piet van der Zwaag
WMR	Alex Hoeve

#### 9 Jury / Umpires

##### International Jury

Jan Stage, DEN,(Chairman)  
Chris Atkins, GBR  
Kamen Fillyov, BUL  
Jon Napier, GBR  
Foulette Pautier, FRA  
Johan Devocht, BEL  
Jana Lemberg, FIN  
Leo Pieter Stoel, NED  
Eric Mehlbaum, NED  
Pauline Wilmlink, NED  
Hedwich Kuipers, NED  
John Borsboom, NED

##### Umpire team

Sally Burnett, GBR  
Flavio Naveira, ARG  
Sandy Grosvenor, USA  
Bjorn Anker-Moller, DEN  
Bill O`Hara, IRL  
Alan Baser, GBR  
Jos Spijkerman, NED  
Edo Haitsma, NED  
Frank Koornstra, NED  
Karelina Buijtendorp, NED

Secretary to the Jury: Margriet Pannevis NED